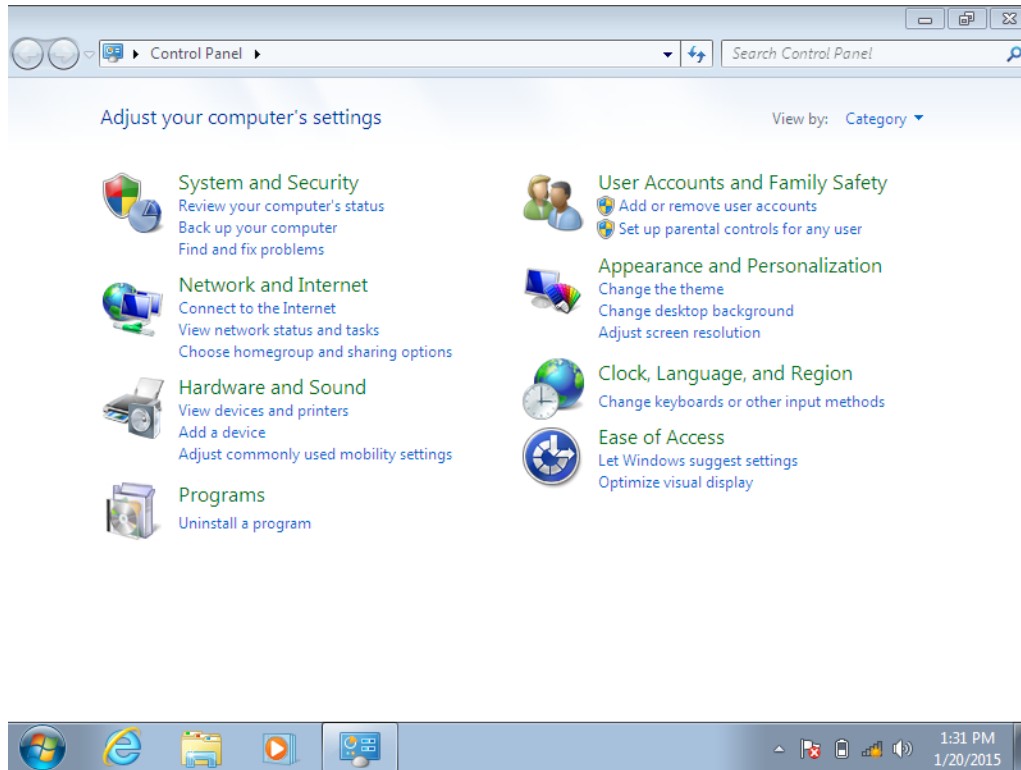
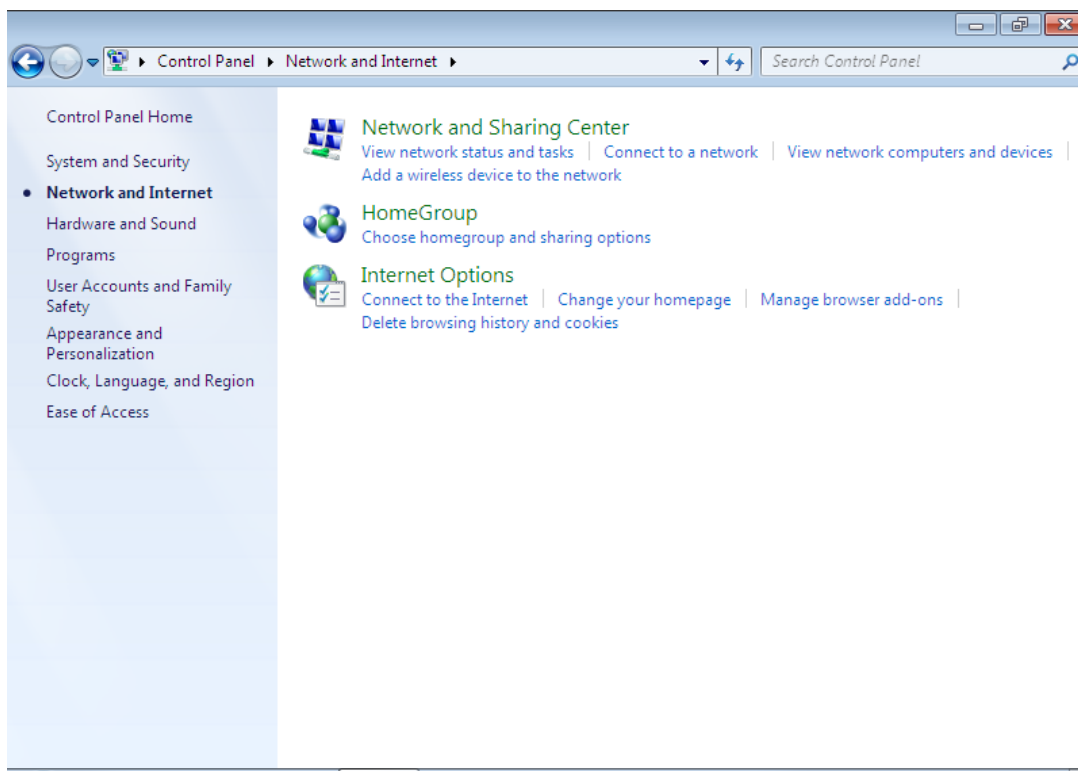


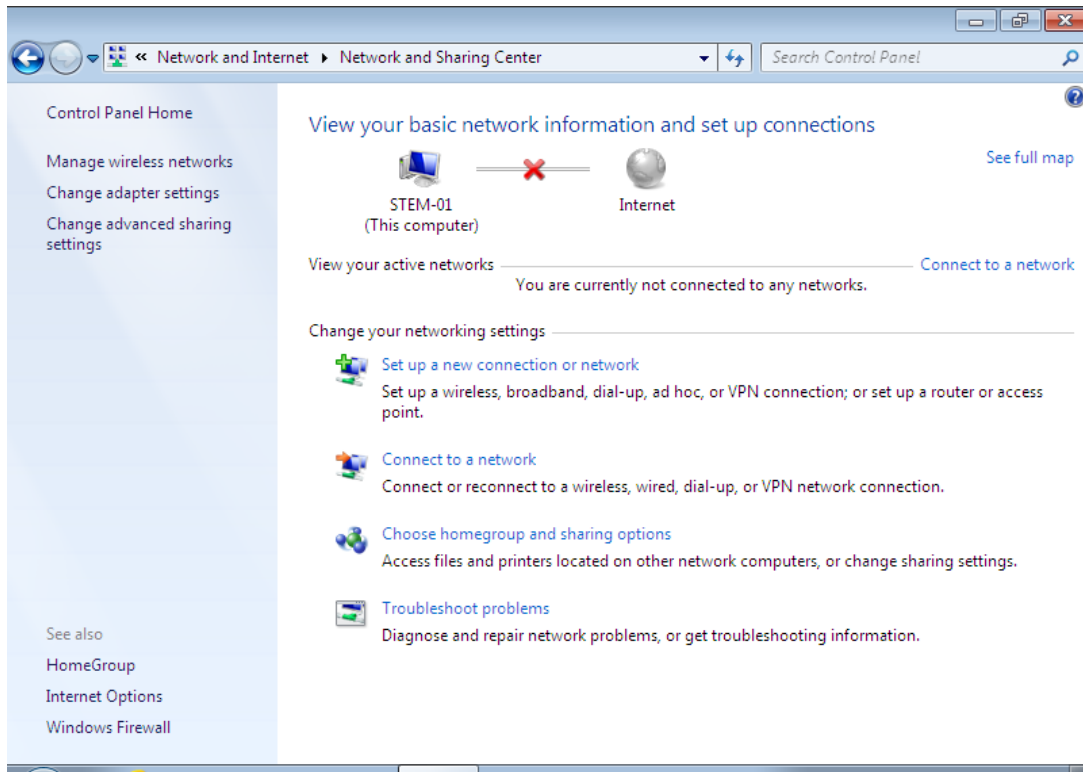
Go to **Start** menu and choose **Control Panel**



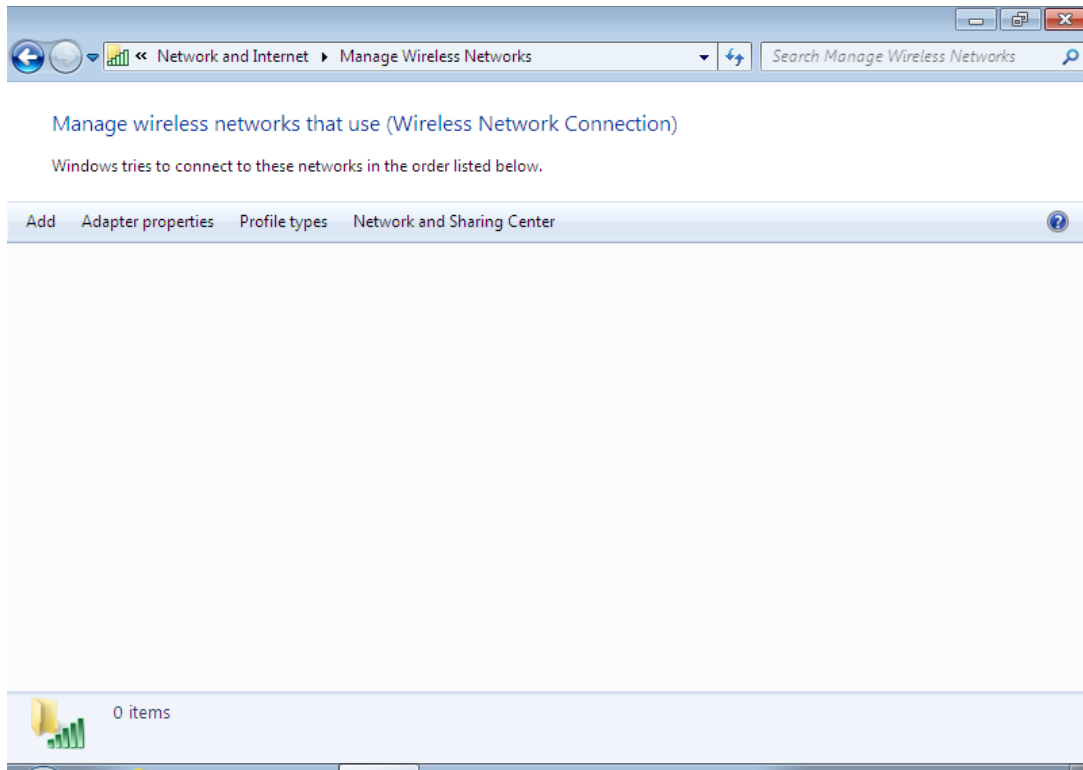
On the screen above, select **Network and Internet**.



Then select **View network status and tasks**

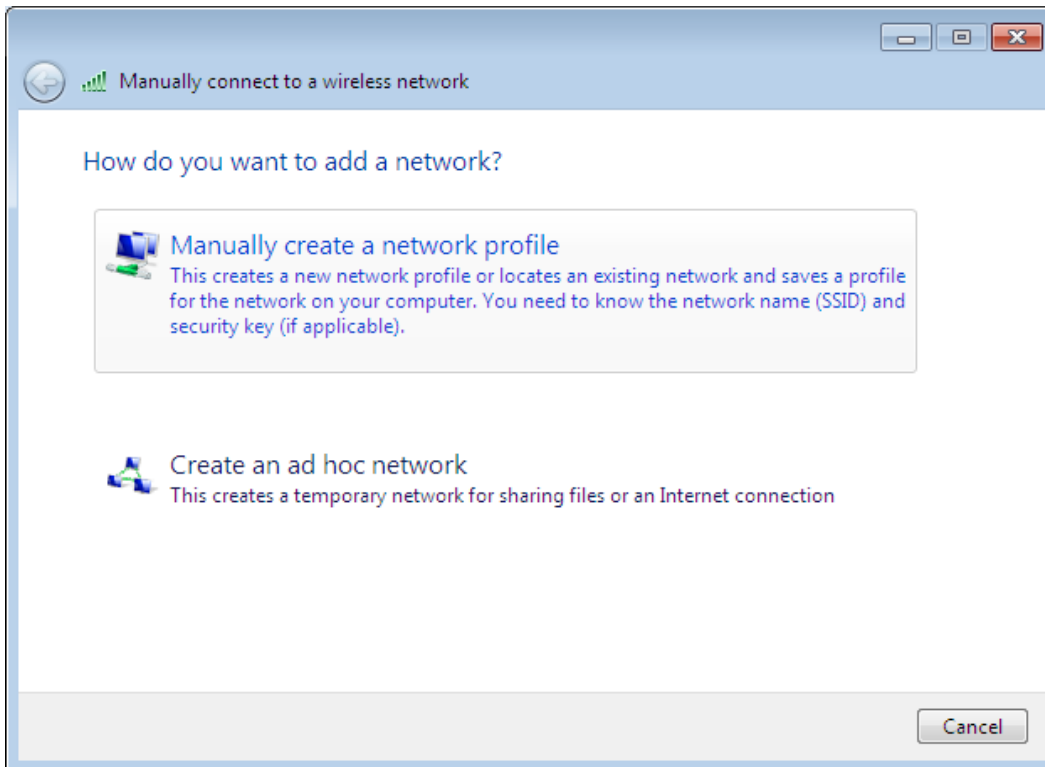


In the light blue bar on the left, select **Manage wireless networks**

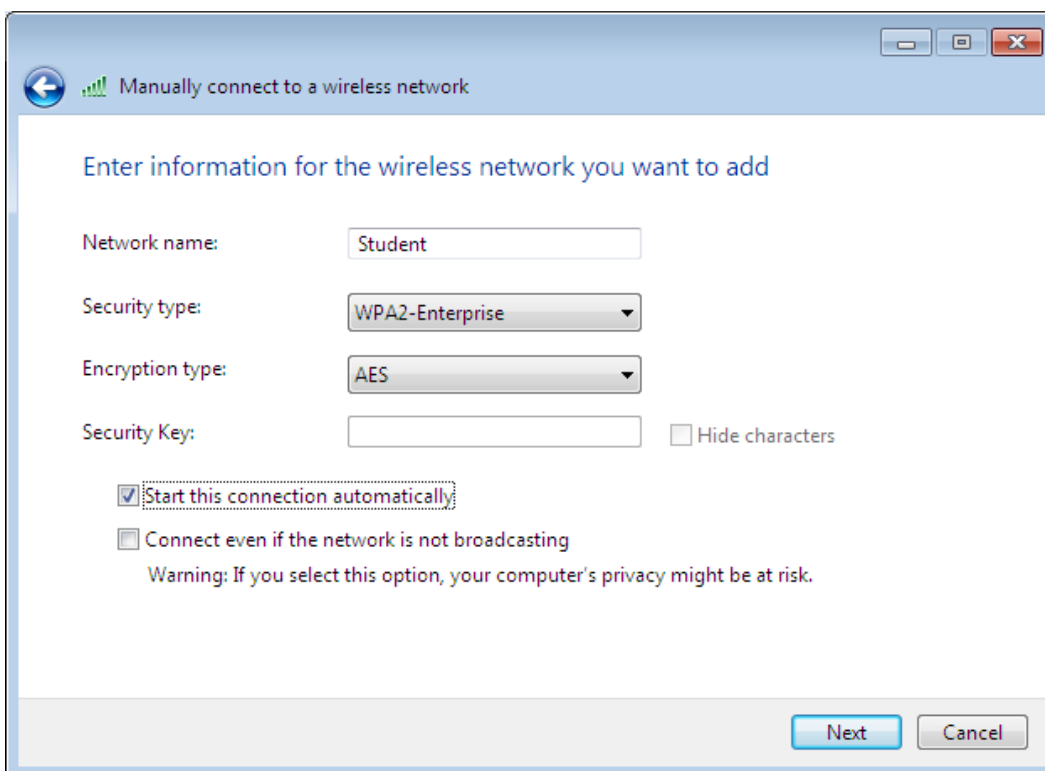


This window should appear. If there is a wireless connection called **Student**, select it, right click **Student**, then select **Remove**.

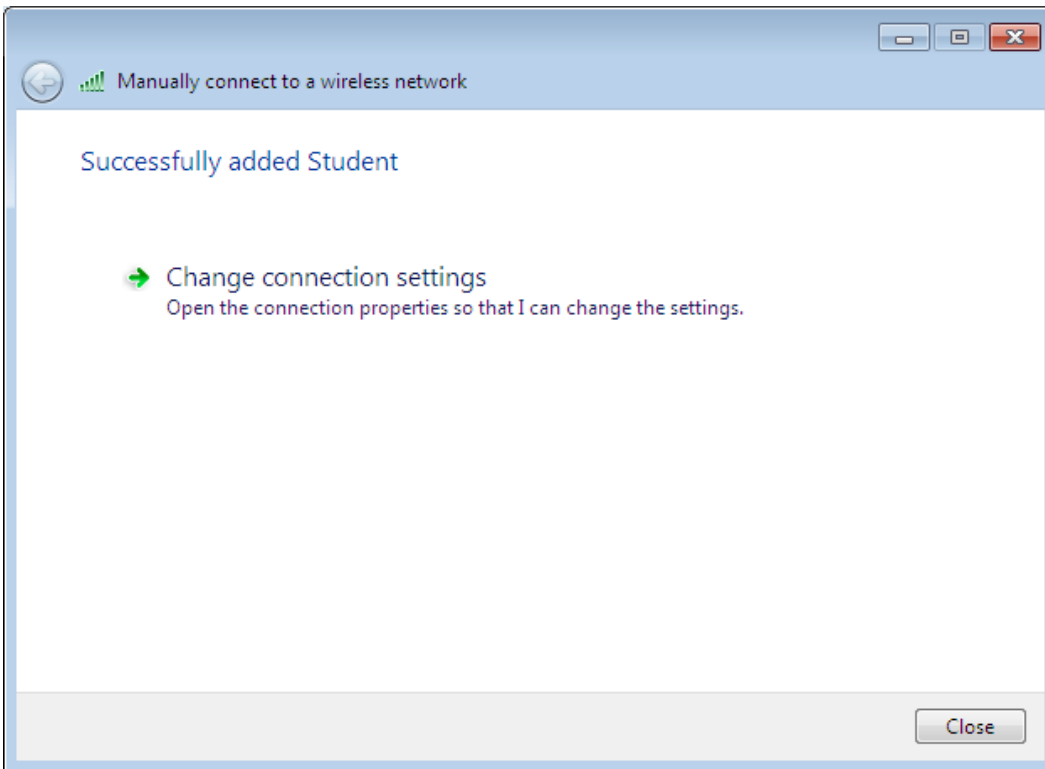
Once that is completed, select **Add**.



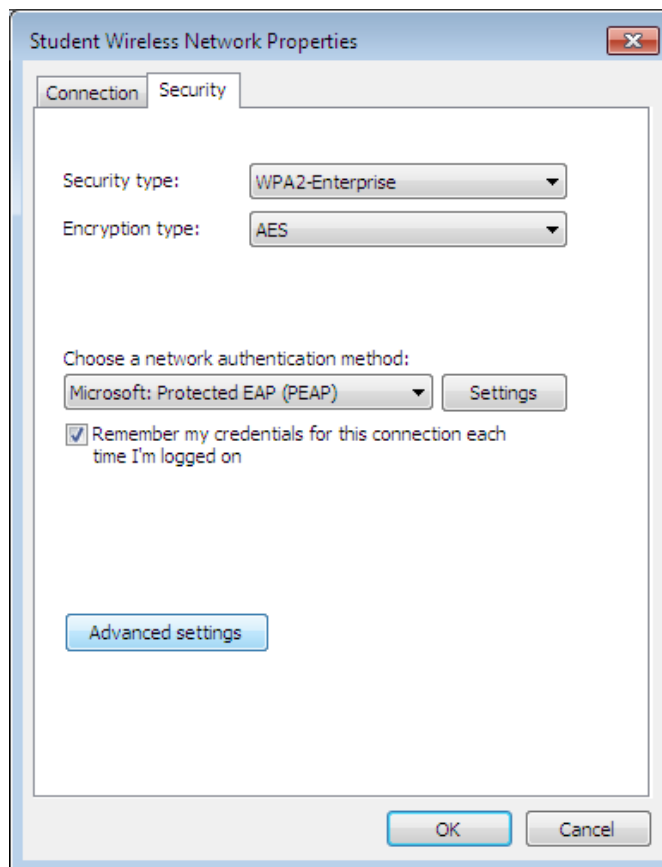
Once you select add, this window appears. Select **Manually create a network profile**



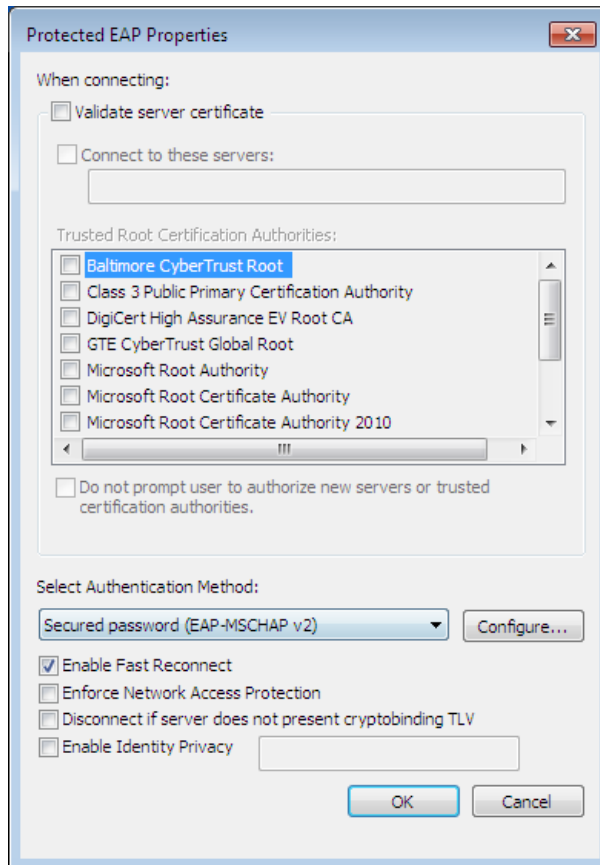
At this screen, enter the information as it is listed for Network Name, Security Type, and Encryption type, then select **Next**.



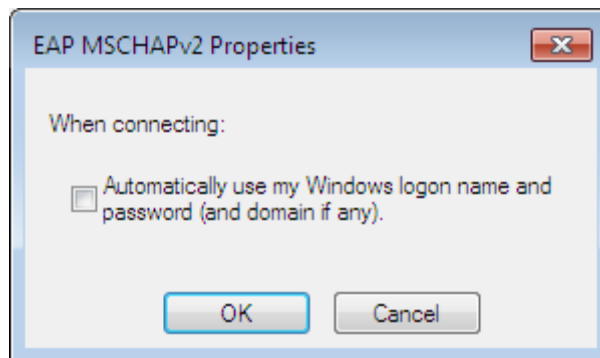
This screen should come up next. When it does, select **Change connection settings**



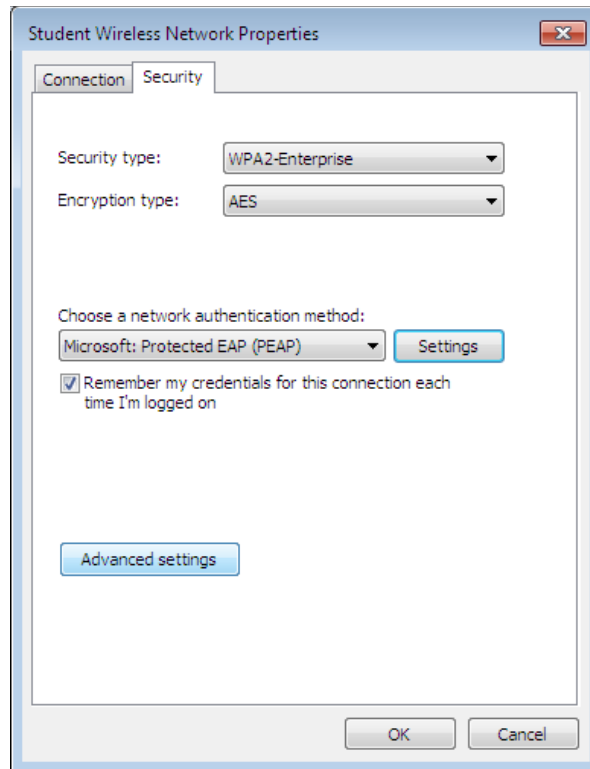
A properties box opens up. Select the Security tab at the top. It should look like this above. Select **Settings**.



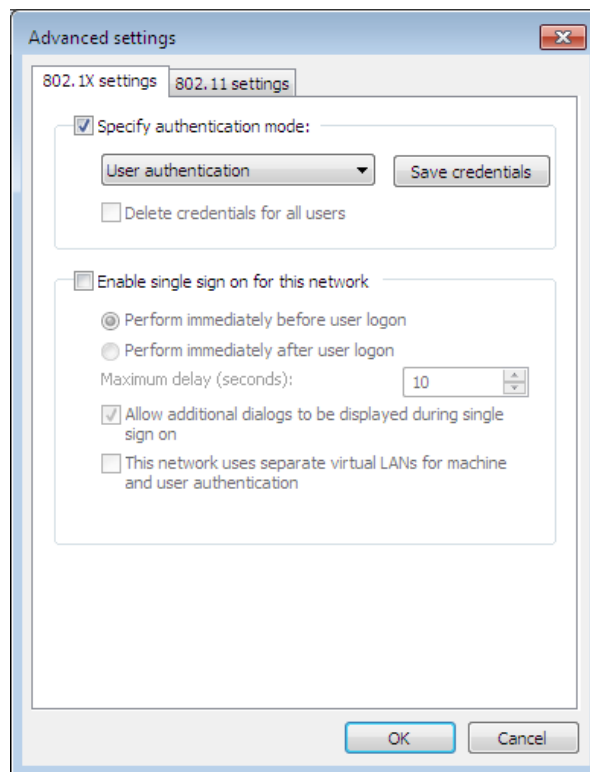
This window now opens. Uncheck the box that says **Validate server certificate**, then select **Configure**



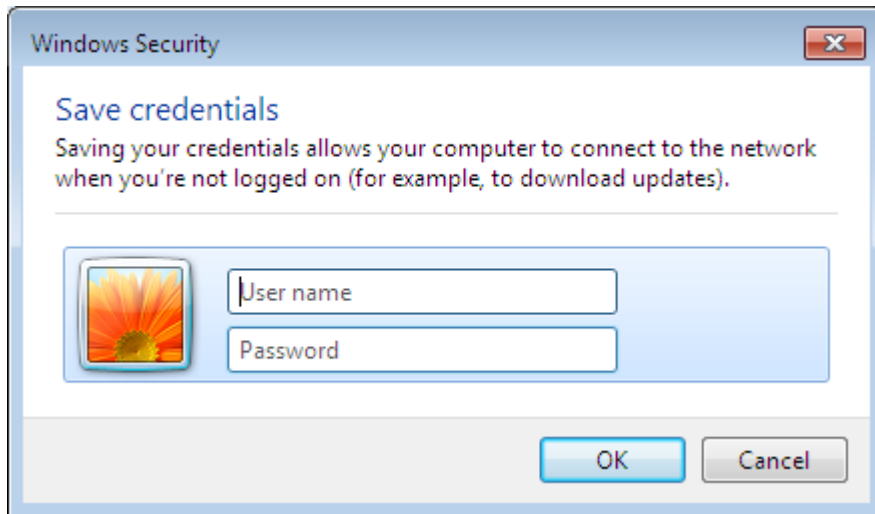
This window now pops up. Uncheck the box here, then click **OK**. Then click **OK** again.



You should now be back at this window. Select **Advanced settings**.



This window should open. Check the box that says **Specify authentication mode**. In the drop down menu, select **User authentication** as shown, then select **Save credentials**.



Type your user name and password here, click **OK**. Then click **OK** twice more.

It should automatically connect you to the Student wireless at this time.