

# Enrollment

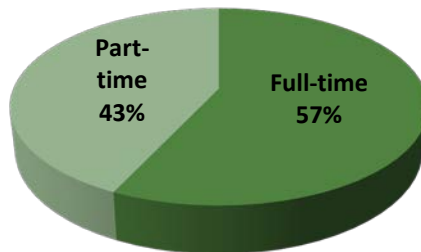
# Profile of Student Body

Enrollment by Race					
Race	Fall 2012	Fall 2013	Fall 2014	Fall 2015	Fall 2016
Asian/PI	2.30%	2.10%	2.21%	2.45%	2.79%
Amer. Indian	0.95%	0.73%	1.04%	0.25%	0.24%
Alaskan	0.06%	0.17%	0.07%	0.02%	0.02%
Black	9.23%	9.09%	8.79%	8.87%	9.14%
Hispanic	3.72%	4.20%	4.42%	5.00%	6.21%
White	80.79%	79.77%	81.11%	81.09%	80.39%
Unclassified	0.86%	1.99%	3.00%	2.32%	1.21%
> 1 Race	2.10%	1.95%	--	--	--

Age Distribution					
Age	Fall 2012	Fall 2013	Fall 2014	Fall 2015	Fall 2016
20 & under	56.3%	59.5%	62.1%	71.1%	72.8%
21-24	16.4%	16.9%	16.4%	12.4%	11.7%
25-34	14.7%	13.3%	13.1%	10.2%	9.3%
35 & over	12.4%	10.2%	8.4%	6.3%	6.2%
Avg. Age	25	23	22	22	21
Oldest	73	78	75	80	77
Youngest	14	14	8	15	14

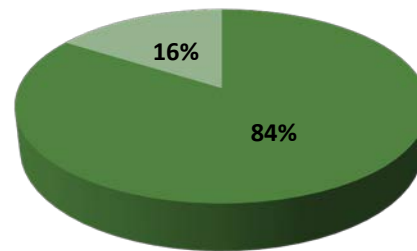
Source: TBR Enrollment by Ethnicity and Race

**Enrollment by Status  
Fall 2016**

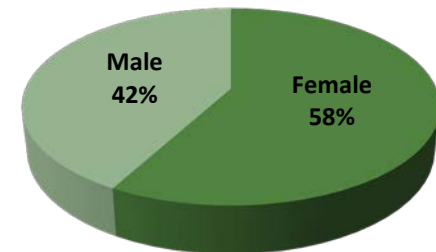


**Fall 2016**

■ Traditional ■ Non-traditional



**Enrollment by Gender  
Fall 2016**



# Headcount & FTE Enrollment

Headcount and FTE for Fall and Spring Semesters										
	Fall 2012	Spring 2013	Fall 2013	Spring 2014	Fall 2014	Spring 2015	Fall 2015	Spring 2016	Fall 2016	Spring 2017
Headcount	4,763	4,362	4,909	4,400	4,758	4,288	5,256	4,670	5,838	5,144
FTE	2,851	2,533	2,891	2,568	2,899	2,600	3,533	3,095	4,081	3,494

Headcount and FTE by Affiliate Campus				
Affiliate Campus	Fall 2016		Spring 2017	
	HCT	FTE	HCT	FTE
Fayetteville	411	275.2	347	238.9
McMinnville	1,001	657.5	931	595.5
Moore County	1,639	1,203.8	1,394	1,005.1
Smyrna	2,668	1,900.2	2,309	1,590.9

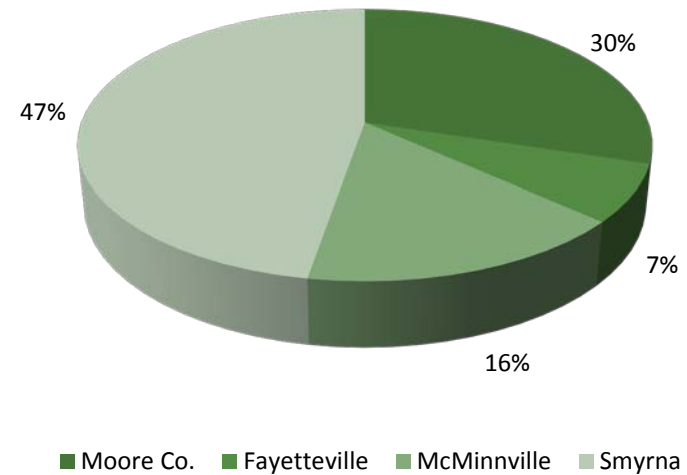
Fayetteville Campus includes the following high school: Lincoln County

McMinnville Campus includes the following high schools: Cannon, Smithville, Spencer Van Buren, Warren and White

Moore County Campus includes the following high schools: Central, Community, Franklin and Tullahoma

Smyrna Campus includes Bridgestone, Bridgestone/Firestone and the following high schools: Cascade, La Vergne, Oakland, and Stewarts Creek

### Fall 2016 FTE by Campus



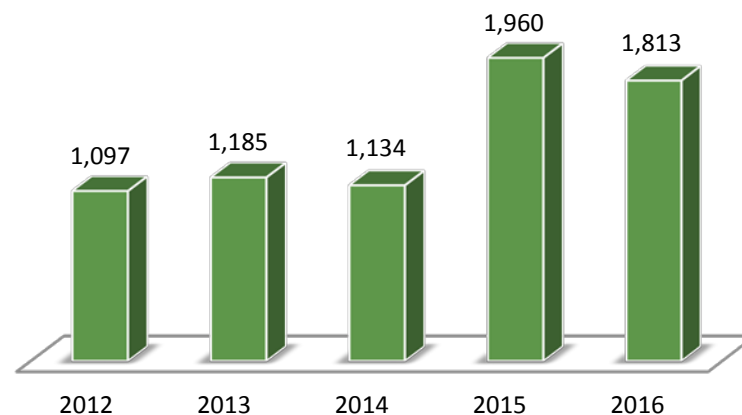
# Fall Enrollment Growth

Headcount by Status										
Status	Fall 2012	% Change	Fall 2013	% Change	Fall 2014	% Change	Fall 2015	% Change	Fall 2016	% Change
Part-time	2,750	-0.79%	2,929	6.51%	2,665	-9.0%	2,846	6.8%	3,334	17.1%
Full-time	2,013	-9.16%	1,980	-1.64%	2,093	5.7%	2,410	15.1%	2,511	4.2%
<b>Total</b>	<b>4,763</b>	<b>-4.51%</b>	<b>4,909</b>	<b>3.07%</b>	<b>4,758</b>	<b>-3.1%</b>	<b>5,256</b>	<b>10.5%</b>	<b>5,838</b>	<b>11.1%</b>

First-time College and First-time at Institution										
	Fall 2012	% Change	Fall 2013	% Change	Fall 2014	% Change	Fall 2015	% Change	Fall 2016	% Change
Headcount	1,097	-13.1%	1,185	8.0	1,134	-4.3%	1,960	72.8%	1,813	-7.5%

Headcount by Type					
Type	Fall 2012	Fall 2013	Fall 2014	Fall 2015	Fall 2016
1 <sup>st</sup> Freshmen	1,097	1,185	1,134	1,960	1,813
Continuing	2,096	1,993	1,963	1,957	2,363
New Transfer	335	350	326	222	272
Readmit	436	422	419	315	348
Dual	731	925	859	759	1,001
Other*	68	34	89	43	41
<b>Total</b>	<b>4,763</b>	<b>4,909</b>	<b>4,790</b>	<b>5,256</b>	<b>5,838</b>

First-time Freshmen in Fall Semester



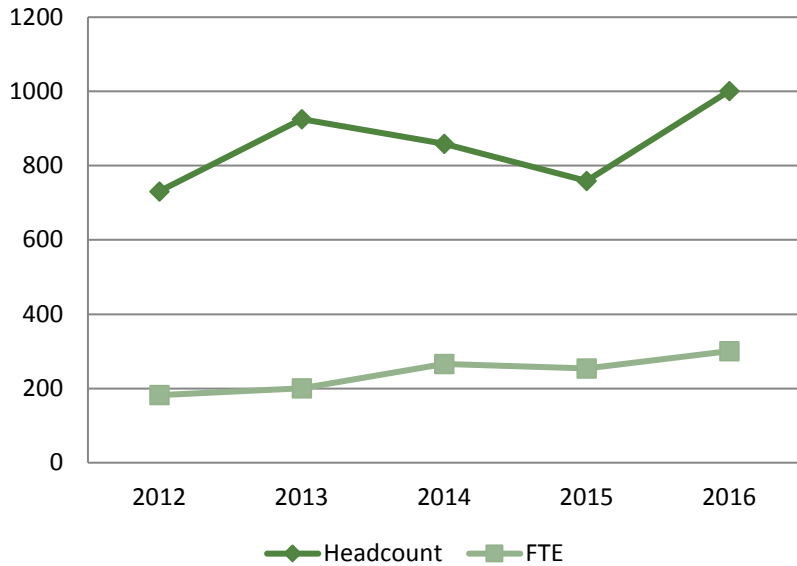
\*Includes special and transient students

# Dual/Joint & TN eCampus Enrollment

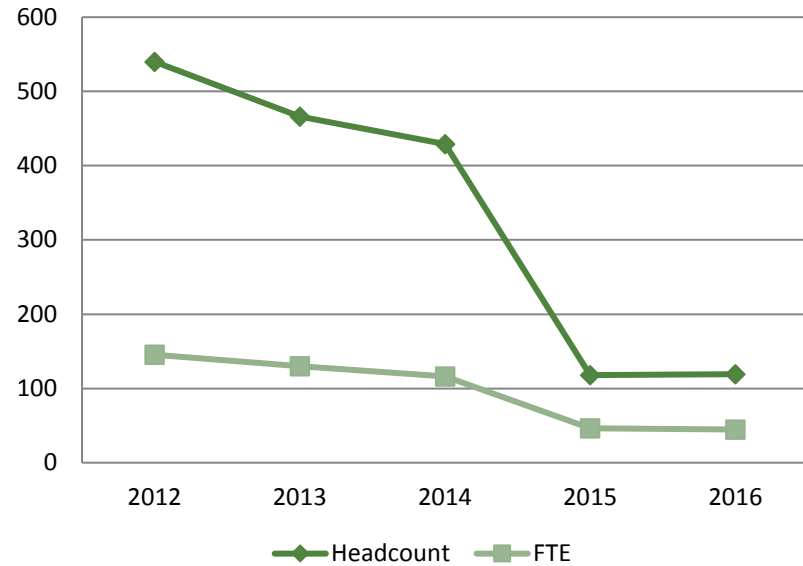
Dual/Joint Enrollment					
	Fall 2012	Fall 2013	Fall 2014	Fall 2015	Fall 2016
Headcount	731	925	859	759	1,001
FTE	200.1	265.8	253.7	217.4	300.6

TN eCampus Enrollment					
	Fall 2012	Fall 2013	Fall 2014	Fall 2015	Fall 2016
Headcount	540	466	429	118	119
FTE	145.4	130.0	116.1	46.5	44.7

Dual/Joint Enrollment



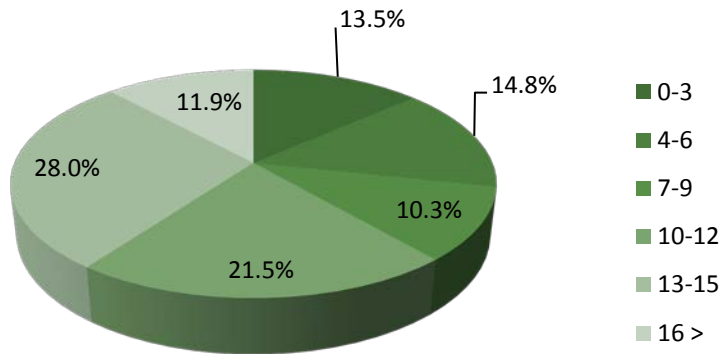
TN eCampus Enrollment



# Credit Hour Enrollment & Enrollment by Major

Credit Hour Load Per Student					
Hours	Fall 2012	Fall 2013	Fall 2014	Fall 2015	Fall 2016
0-3	880	962	897	788	790
4-6	916	995	879	808	865
7-9	720	713	644	590	600
10-12	1,222	1,172	1,195	1,275	1,254
13-15	761	837	875	1,323	1,634
16 >	164	230	268	472	695
<b>Total</b>	<b>4,763</b>	<b>4,909</b>	<b>4,758</b>	<b>5,256</b>	<b>5,838</b>

Credit Hour Load Per Student



Headcount by Major					
Major	Fall 2012	Fall 2013	Fall 2014	Fall 2015	Fall 2016
Business Technology	212	211	148	113	130
Education	268	250	192	242	222
Mechatronics	21	48	123	175	224
Nursing & Allied Health	152	148	145	174	185
University Parallel & TTP	3,259	3,233	3,179	3,689	3,987
Undeclared/Other	851	1,019	971	863	1,090
<b>Total</b>	<b>4,763</b>	<b>4,909</b>	<b>4,758</b>	<b>5,256</b>	<b>5,838</b>

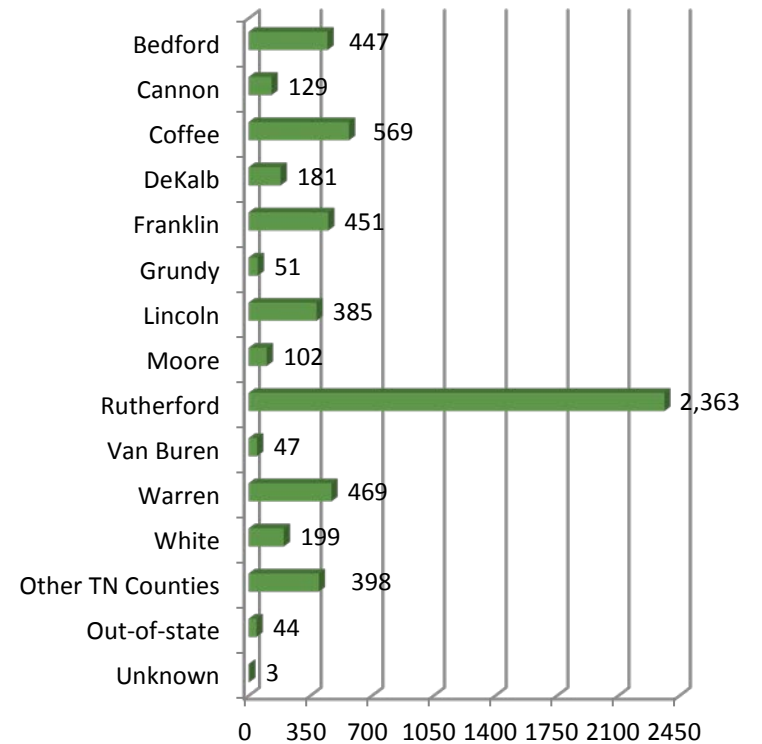
FTE by Major					
Major	Fall 2012	Fall 2013	Fall 2014	Fall 2015	Fall 2016
Business Technology	143	123	89	70	90
Education	180	178	137	179	180
Mechatronics	7	22	70	114	172
Nursing & Allied Health	102	99	99	116	126
University Parallel & TTP	2,182	2,162	2,237	2,798	3,179
Undeclared/Other	237	307	267	256	334
<b>Total</b>	<b>2,851</b>	<b>2,891</b>	<b>2,953</b>	<b>3,533</b>	<b>4,081</b>

Business Technology includes: business, business tech., and information systems tech.  
 Education includes: early childhood and teaching  
 Nursing & Allied Health includes: AEMT, EMT, nursing, paramedics  
 University Parallel & TTP includes: AA and AS degrees  
 Undeclared/Other includes: special for credit, criminal justice, prof. studies, and web tech.

# Enrollment by Tennessee County

Enrollment by County of Residence						
County	2012	2013	2014	2015	2016	% of Total HC
Bedford	388	364	403	471	447	7.66%
Cannon	112	121	112	114	129	2.21%
Coffee	564	589	524	574	569	9.75%
DeKalb	138	152	154	171	181	3.10%
Franklin	424	437	391	425	451	7.73%
Grundy	40	45	50	58	51	0.87%
Lincoln	369	372	356	351	385	6.59%
Moore	101	100	106	100	102	1.75%
Rutherford	1,561	1,739	1,666	1,937	2,363	40.48%
Van Buren	53	64	68	51	47	0.81%
Warren	447	417	414	437	469	8.03%
White	169	142	142	172	199	3.41%
Other TN Counties	367	325	337	352	398	6.82%
Out-of-state	27	41	35	43	44	0.75%
Unknown	3	0	0	0	3	0%
<b>Total</b>	<b>4,763</b>	<b>4,909</b>	<b>4,758</b>	<b>5,256</b>	<b>5,838</b>	

Fall 2016 Enrollment by County



## Headcount: Community College Comparison

Headcount 10-Year Enrollment Trends, 2006 to 2016												
2-Year Institution	2006	2007	2008	2009	2010	2011	2012	2013	2014	2015	2016	% Change 2006 to 2016
CSTCC	8,060	8,108	8,485	9,431	10,436	10,498	10,160	10,123	9,557	9,436	8,685	7.8%
CLSCC	2,947	2,999	3,335	3,615	3,754	3,832	3,640	3,812	3,529	3,530	3,325	12.8%
COSCC	4,522	4,633	4,767	5,581	5,648	5,514	5,379	5,287	5,231	5,415	5,762	27.4%
DSCC	2,586	2,568	2,749	3,395	3,759	3,777	3,595	3,271	2,863	2,873	2,845	10.0%
JSCC	4,099	4,379	4,381	5,109	5,375	4,935	4,497	4,593	4,928	4,837	4,718	15.1%
MSCC	3,833	4,113	4,394	5,079	5,256	5,004	4,782	4,925	4,793	5,294	5,851	52.6%
NSCC	7,192	7,077	7,716	8,869	9,906	9,883	9,887	10,163	10,048	10,701	9,507	32.2%
NSTCC	5,145	5,237	5,470	6,270	6,780	6,478	6,446	5,895	5,865	6,086	6,145	19.4%
PSTCC	8,188	8,608	8,742	10,297	11,169	11,464	10,681	10,836	10,247	10,416	10,395	27.0%
RSCC	5,353	5,404	5,531	6,281	6,881	6,906	6,659	6,361	5,962	6,012	5,780	8.0%
STCC	11,446	10,617	11,427	13,016	13,505	13,038	12,235	10,876	10,333	9,244	8,469	-26.0%
VSCC	7,370	7,065	7,241	8,430	9,029	8,694	8,210	8,190	7,677	8,075	8,686	17.9%
WSCC	5,738	5,825	5,918	6,853	6,960	6,754	6,571	6,281	6,031	5,971	6,004	4.6%
<b>Total 2-Year</b>	<b>76,479</b>	<b>76,633</b>	<b>80,156</b>	<b>92,226</b>	<b>98,458</b>	<b>96,777</b>	<b>92,742</b>	<b>90,613</b>	<b>87,064</b>	<b>87,890</b>	<b>86,172</b>	<b>12.7%</b>

Source: Tennessee Higher Education Commission



## FTE: Community College Comparison

FTE 10-Year Enrollment Trends, 2006 to 2016												
2-Year Institution	2006	2007	2008	2009	2010	2011	2012	2013	2014	2015	2016	% Change 2006 to 2016
CSTCC	5,054	5,044	5,344	5,987	6,712	6,671	6,585	6,388	5,901	6,190	5,743	13.6%
CLSCC	2,034	2,022	2,195	2,504	2,592	2,617	2,482	2,487	2,316	2,413	2,282	12.2%
COSCC	2,963	3,003	3,081	3,569	3,579	3,417	3,348	3,352	3,263	3,634	3,816	28.8%
DSCC	1,693	1,668	1,741	2,213	2,419	2,334	2,217	1,918	1,678	1,690	1,694	0.1%
JSCC	2,791	2,953	2,803	3,313	3,410	3,260	2,847	2,722	2,825	2,907	2,968	6.3%
MSCC	2,566	2,739	2,892	3,353	3,337	3,069	2,925	2,984	2,984	3,654	4,152	61.8%
NSCC	4,082	4,063	4,315	5,154	5,619	5,686	5,681	5,796	5,807	6,272	5,588	36.9%
NSTCC	3,374	3,387	3,606	4,231	4,624	4,423	4,289	3,912	3,888	4,215	4,250	26.0%
PSTCC	5,149	5,446	5,686	6,695	7,274	7,402	7,057	6,978	6,644	6,755	6,645	29.1%
RSCC	3,738	3,764	3,766	4,227	4,389	4,205	4,153	3,964	3,777	3,891	3,788	1.3%
STCC	7,306	6,794	7,219	8,465	8,431	8,216	7,555	6,801	6,355	6,169	5,624	-23.0%
VSCC	4,677	4,427	4,582	5,501	5,777	5,449	5,091	4,985	4,747	5,406	5,869	25.5%
WSCC	3,872	3,884	4,082	4,780	4,808	4,595	4,425	4,103	4,008	4,074	4,086	5.5%
<b>Total</b>	<b>49,299</b>	<b>49,194</b>	<b>51,302</b>	<b>59,993</b>	<b>62,973</b>	<b>61,343</b>	<b>58,656</b>	<b>56,392</b>	<b>54,192</b>	<b>57,269</b>	<b>56,505</b>	<b>14.6%</b>

Source: Tennessee Higher Education Commission