

General Information

About the Fact Book

The Office of Institutional Effectiveness and Assessment is pleased to present the **2016-2017 Motlow State Community College Fact Book, 22nd edition**.

The book is intended as a single, readily accessible, consistent source of information about Motlow State Community College. It is a summary of institutional data gathered from many sources, compiled to capture the 2016-2017 Academic Year. In some instances, multiple years of data are provided for a historical prospective. Enrollment data is extracted from 14th day tables. Though not all-encompassing, the book does provide pertinent facts and figures that may be used for planning, decision making, policy formation, recruitment, and public relations.

The fact book is an annual publication and is made available during the summer semester. For your convenience, an online PDF version of the MSCC Fact Book is available on the Office of Institutional Effectiveness & Research website at <http://www.msc.edu/rpc>.

Sincere appreciation is extended to personnel of internal and external offices who extended their time and expertise to maintain the greatest possible accuracy and standardization of data for this publication.

A concerted effort is made to make this book an increasingly more useful reference that familiarizes the reader with the characteristics of the College's students, faculty, staff, environment and eleven-county service area. Your suggestions and comments toward these goals are welcomed and appreciated.

Sid Hill
Director of Institutional Effectiveness & Assessment
Motlow State Community College
sihill@mscc.edu
931-393-1563

Mission, Vision & History

Mission Statement

Motlow State Community College is a public, multi-campus college offering certificates, associate degrees, and flexible learning pathways for early transfer, college preparation, and workforce training. Students are prepared for employment, career advancement, and four-year college or university transfer. The College serves an eleven-county area comprised of full-time, part-time, traditional, and non-traditional age students from diverse socio-economic populations with disparate educational and cultural backgrounds. The College offers high quality accredited educational programs and a variety of support services emphasizing and promoting student success.

Vision Statement

The vision of Motlow State Community College is to be the area's recognized center for life-long learning and growth opportunities.

History

Motlow State Community College opened its doors as a two-year community college in 1969 with a student enrollment of 551 and 18 full-time faculty members. More than forty years later, student credit enrollment is over 5,000 and a full-time faculty number 93.

State Senator Reagor Motlow, along with brothers Connor, Robert, and D. E.; mother Mrs. Lem Motlow; sister, Mrs. James Boyd, and uncle, Tom Motlow, donated 187 acres located in Moore County, Tennessee to house the college. The college was named Motlow State Community College as a tribute to the Motlow family.

Motlow State surpasses the vision of its pioneers more than 40 years ago. Motlow embraces the community college concept to its greatest degree. In addition to being a quality education institution where teaching and learning are paramount, Motlow has expanded its services to an 11-county area with four teaching locations in Lynchburg, Fayetteville, McMinnville, and Smyrna.

Motlow's history includes leadership by presidents Sam Ingram, Harry Wagner, Frank Glass, Art Walker, MaryLou Apple and current president Anthony Kinkel. These individuals have guided the college to the forefront in technology and nursing education. The four-year institution continues as a primary customer with the majority of Motlow students in transfer programs.

Motlow prepares its students to meet the challenges of a global community while making an economic, intellectual, social and professional impact in local communities.

Strategic Plan

Strategic Plan

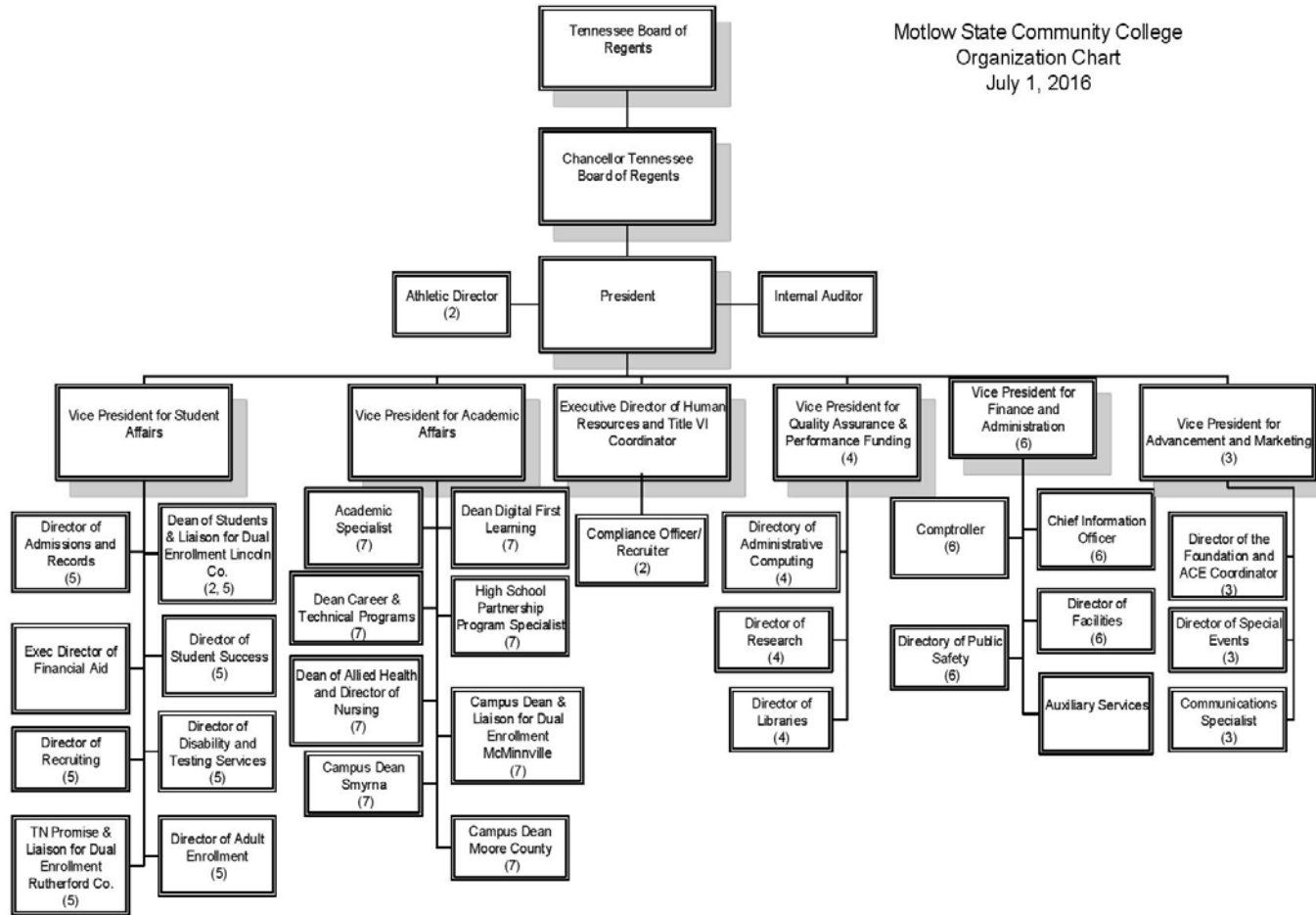
The 2015-2025 Strategic Plan is currently effect and contains the following objectives.

Motlow State Community College will:

1. Increase the total participation level of students and the level of participation of focus populations dual students, adults, academically underprepared and Pell-eligible
2. Increase student indicators of timely progression toward completion of all students and of focus populations adults, academically underprepared and Pell-eligible
3. Achieve a threshold success rate equal to or greater than its peers for courses most critical to student success
4. Increase the number of associate degrees and certificates for all students and for focus populations adults, academically underprepared and Pell-eligible
5. Increase 150% and 300% graduation rates
6. Annually exceed the comparative or college peer group scores for academic success measures including exit exams, major field tests, and licensure exams
7. Develop and implement high impact practices for high enrollment courses
8. Annually exceed the comparative or college peer group percentage of full-time faculty involved in career furthering activities
9. Annually evaluate and improve student support services to students as determined by student satisfaction surveys including CCSSE and SENSE
10. Acquire and/or maintain accreditation for accreditable programs and maintain satisfactory audits of non-accredited programs
11. Increase resources from external sources
12. Exceed an annual placement rate of 95% for AAS degree and technical certificate graduates
13. Develop and maintain a comprehensive instructional index for academic disciplines that equals or exceeds that of its peers
14. Maintain a composite financial index that equals or exceeds that of its peers

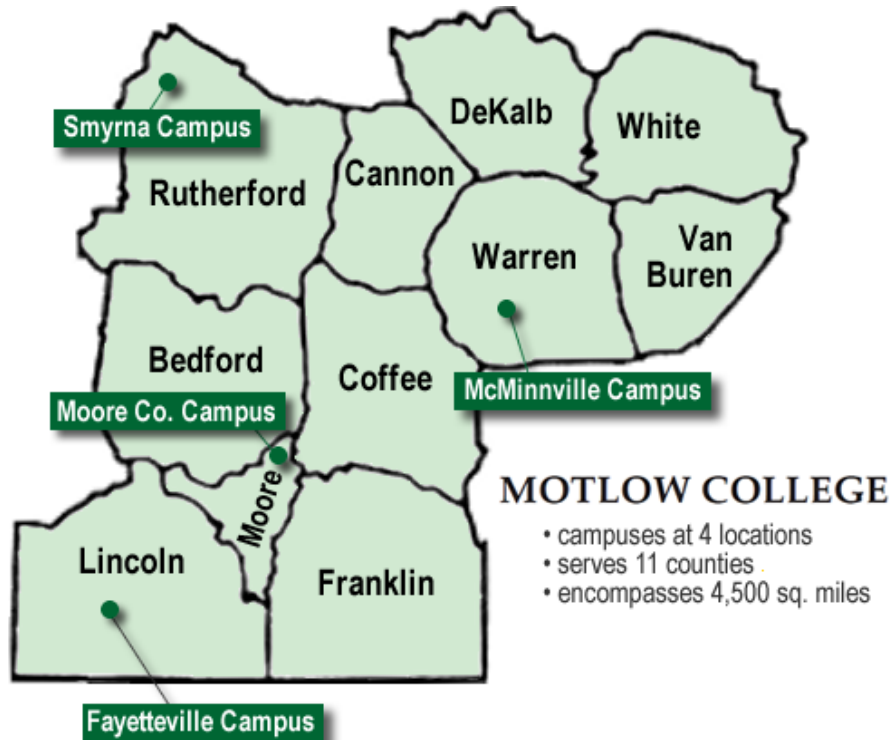
Organizational Chart

Motlow State Community College
 Organization Chart
 July 1, 2016



Service Area

With locations in Lynchburg, Fayetteville, McMinnville, and Smyrna, Motlow's service area encompasses eleven Middle Tennessee counties including Bedford, Cannon, Coffee, DeKalb, Franklin, Lincoln, Moore, Rutherford, Van Buren, Warren, and White counties. These counties are in Local Workforce Investment Areas (LWIA) 6, 7 and 9.



Population Growth in Service Area 2010-2016			
County	2010 Population	2016 Population	Percent Change
Bedford	45,056	47,484	5.4%
Cannon	13,816	14,027	1.5%
Coffee	52,800	54,682	3.6%
DeKalb	18,720	19,361	3.4%
Franklin	41,064	41,700	1.5%
Lincoln	33,350	33,645	0.9%
Moore	6,345	6,323	-0.3%
Rutherford	262,592	308,251	17.4%
Van Buren	5,558	5,689	2.4%
Warren	39,824	40,516	1.7%
White	25,836	26,653	3.2%

Source: quickfacts.census.gov

For additional information on Motlow's service area, see Service Area section.

Quick Facts

Motlow College Quick Facts

Campus Locations

Moore County Campus - 6015 Ledford Mill Rd., Tullahoma, TN
 Fayetteville Campus - 1802 Winchester Highway, Fayetteville, TN
 McMinnville Campus - 225 Cadillac Lane, McMinnville, TN
 Smyrna Campus - 5002 Motlow College Blvd., Smyrna, TN

Executive Staff

Anthony Kinkel, President
 Hilda Tunstill, VP for Finance and Administration
 Melody Edmonds, Interim VP for Academic Affairs
 Cheryl Hyland, VP for Student Affairs
 Scott Cook, VP for Quality Assurance and Performance Funding
 Terri Bryson, VP for Marketing and Campus Activities
 Laura Jent, Exec. Director of Human Resources

Awards Offered

Associate of Arts, Associate of Science, Associate of Applied Science, Associate of Science in Teaching, Technical Certificate

Tuition for Full-time Students (2016-2017)

In-state: \$ 4,051 Out-of-state: \$ 15,715
 Books & Supplies: \$ 1,851

Annual Enrollment*

Fall 2016	FTE: 4,081	Headcount: 5,838
Spring 2017	FTE: 3,494	Headcount: 5,144

Personnel (2016-2017)

Faculty:	Full-time: 93	Part-time: 233
Staff:	Full-time: 147	Part-time: 13
Total:	Full-time: 240	Part-time: 246

~Tennessee Board of Regents data

Student Body Characteristics (Fall 2016)**

Male:	42%	Full-time:	68%
Female:	58%	Part-Time:	32%
Average Age:	22	Avg. Class Size:	15
African-American:	10%	Caucasian:	78%
Hispanic:	7%	Other***:	5%

Graduates by Degree/Certificate (2016-17)

Associate of Arts:	40
Associate of Science:	643
Associate of Applied Science:	111
Associate of Science in Teaching:	35
Technical Certificate	142

Student Success Rates

Cumulative GPA Fall 2016:	2.82
Fall 2015 to Fall 2016 Retention~:	59.0%

Did You Know?

- Motlow's F15 to F16 headcount increase of 11.1% was the highest increase among TBR institutions for the second year in a row.
- Motlow's F15 to F16 FTE increase of 15.5% was the highest increase among TBR institutions for the second year in a row.
- 31.5% of first-time, full-time freshman who enrolled at Motlow in fall 2010 completed an associate degree and/or a bachelor's degree by spring 2016 according to THEC.

*Excludes audit students

**Excludes dual/joint enrollment

***Other includes not specified and individuals with multiple races

~Retention rate includes first-time, full-time freshmen; IPEDS data.

Fayetteville Campus Quick Facts

Location

1802 Winchester Highway, Fayetteville, Tennessee
Lincoln County

Enrollment on Fayetteville Campus

Fall 2016 FTE: 275 Headcount: 411
Spring 2017 FTE: 239 Headcount: 347

Tennessee Promise Enrollment*

Fall 2016 FTE: 137 Headcount: 151
Spring 2017 FTE: 107 Headcount: 112

Student Body Characteristics (Fall 2016)**

Male: 44% Full-time: 65%
Female: 56% Part-Time: 35%
Traditional: 85% Non-traditional: 15%
African-Amer.: 4% Hispanic: 4%
Caucasian: 88% Other***: 4%

Headcount for Fayetteville Campus & Affiliate Locations~

Student Type	Fall 2016	Spring 2017
1 st Time Freshman	129	11
Continuing	131	222
New Transfer	7	10
Readmit	35	17
Dual	96	86
Special & Transient	13	1
Total	411	347

Campus Assistant Dean: Lisa Smith

Retention Rates

All Students

Fall 2015 to Fall 2016: 46%
Fall 2016 to Spring 2017: 80%

First-Time Freshmen

Fall 2015 to Fall 2016: 62%
Fall 2016 to Spring 2017: 90%

Tennessee Promise**

Fall 2015 to Fall 2016: 65%
Fall 2016 to Spring 2017: 96%

Campus Averages

Cumulative GPA: 2.98
Average Age: 21
Avg. Class Size: 13

Library Holdings

Books (volumes): 4,205
Annual Circulation: 677
AV Materials: 129,725
E-Books: 2,528,222

*TN Promise is not sorted by cohorts; any student who was registered and eligible for TNP financial awards in fall 2016 is counted.

** Excludes dual/joint enrollment students; includes audit students

***Other includes not specified and individuals with multiple races

~Fayetteville Campus enrollment data includes the following high schools:
Lincoln County (Lincoln)

McMinnville Campus Quick Facts

Location

225 Cadillac Lane, McMinnville, Tennessee
Warren County

Enrollment on McMinnville Campus*

Fall 2016 FTE: 658 Headcount: 1,001
Spring 2017 FTE: 596 Headcount: 931

Tennessee Promise Enrollment**

Fall 2016 FTE: 310 Headcount: 336
Spring 2017 FTE: 254 Headcount: 279

Student Body Characteristics (Fall 2016)***

Male: 41% Full-time: 68%
Female: 59% Part-Time: 32%
Traditional: 81% Non-traditional: 19%
African-Amer.: 3% Hispanic: 7%
Caucasian: 87% Other~: 3%

Headcount for McMinnville Campus & Affiliate Locations

Student Type	Fall 2016	Spring 2017
1 st Time Freshman	284	23
Continuing	356	563
New Transfer	37	23
Readmit	50	57
Dual	271	258
Special & Transient	3	7
Total	1,001	931

Campus Dean: Shane Buchanan, Interim

Retention Rates

All Students

Fall 2015 to Fall 2016: 54%
Fall 2016 to Spring 2017: 80%

First-Time Freshmen

Fall 2015 to Fall 2016: 68%
Fall 2016 to Spring 2017: 75%

Tennessee Promise**

Fall 2015 to Fall 2016: 71%
Fall 2016 to Spring 2017: 91%

Campus Averages

Cumulative GPA: 2.99
Average Age: 22
Avg. Class Size: 16

Library Holdings

Books (volumes): 9,546
Annual Circulation: 3,428
AV Materials: 129,860
E-Books: 2,528,222

*McMinnville Campus enrollment data includes the following high schools: Cannon, Smithville (DeKalb), Spencer Van Buren (Van Buren), Warren Co. and White Co.

**TN Promise is not sorted by cohorts; any student who was registered and eligible for TNP financial awards in fall 2016 is counted.

*** Excludes dual/joint enrollment students; includes audit students

~Other includes not specified and individuals with multiple races

Moore County Campus Quick Facts

Location

6015 Ledford Mill Road, Tullahoma, Tennessee
Moore County

Enrollment on Moore County Campus*

Fall 2016 FTE: 1,204 Headcount: 1,639
Spring 2017 FTE: 1,005 Headcount: 1,394

Tennessee Promise Enrollment**

Fall 2016 FTE: 588 Headcount: 614
Spring 2017 FTE: 486 Headcount: 509

Student Body Characteristics (Fall 2016)***

Male:	37%	Full-time:	74%
Female:	63%	Part-Time:	26%
Traditional:	84%	Non-traditional:	16%
African-Amer.:	7%	Hispanic:	5%
Caucasian:	86%	Other~:	2%

Headcount for Moore County Campus & Affiliate Locations		
Student Type	Fall 2016	Spring 2017
1 st Time Freshman	537	26
Continuing	652	1,007
New Transfer	71	35
Readmit	103	62
Dual	273	261
Special & Transient	3	3
Total	1,639	1,394

Campus Dean: Cheryl Norris

Retention Rates

All Students

Fall 2015 to Fall 2016: 47%
Fall 2016 to Spring 2017: 78%

First-Time Freshmen

Fall 2015 to Fall 2016: 55%
Fall 2016 to Spring 2017: 79%

Tennessee Promise**

Fall 2015 to Fall 2016: 61%
Fall 2016 to Spring 2017: 88%

Campus Averages

Cumulative GPA: 2.71
Average Age: 22
Avg. Class Size: 17

Library Holdings

Books (volumes): 50,094
Annual Circulation: 4,935
AV Materials: 130,327
E-Books: 2,528,222

*Moore County Campus enrollment_data includes the following high schools: Central (Bedford), Community (Bedford), Franklin, Moore, and Tullahoma (Coffee)

**TN Promise is not sorted by cohorts; any student who was registered and eligible for TNP financial awards in fall 2016 is counted.

***Excludes dual/joint enrollment students; includes audit students

~Other includes not specified and individuals with multiple races

Smyrna Campus Quick Facts

Location

5002 Motlow College Blvd., Smyrna, Tennessee
Rutherford County

Enrollment on Smyrna Campus*

Fall 2016 FTE: 1,900 Headcount: 2,668
Spring 2017 FTE: 1,591 Headcount: 2,309

Tennessee Promise Enrollment**

Fall 2016 FTE: 909 Headcount: 979
Spring 2017 FTE: 704 Headcount: 753

Student Body Characteristics (Fall 2016)***

Male:	45%	Full-time:	68%
Female:	55%	Part-Time:	32%
Traditional:	81%	Non-traditional:	19%
African-Amer.:	16%	Hispanic:	8%
Caucasian:	70%	Other~:	6%

Headcount for Smyrna Campus & Affiliate Locations		
Student Type	Fall 2016	Spring 2017
1 st Time Freshman	859	97
Continuing	1,161	1,659
New Transfer	147	119
Readmit	135	158
Dual	348	250
Special & Transient	18	26
Total	2,668	2,309

Campus Dean: Elizabeth Fitch

Campus Assistant Dean: Elizabeth White

Retention Rates

All Students

Fall 2015 to Fall 2016: 53%
Fall 2016 to Spring 2017: 76%

First-Time Freshmen

Fall 2015 to Fall 2016: 59%
Fall 2016 to Spring 2017: 72%

Tennessee Promise**

Fall 2015 to Fall 2016: 65%
Fall 2016 to Spring 2017: 83%

Campus Averages

Cumulative GPA: 2.65
Average Age: 22
Avg. Class Size: 20

Library Holdings

Books (volumes): 3,667
Annual Circulation: 2,945
AV Materials: 129,754
E-Books: 2,528,222

*Smyrna Campus enrollment data includes Bridgestone (Rutherford), Bridgestone/Firestone (Rutherford), and the following high schools: Cascade (Bedford), La Vergne (Rutherford) Oakland (Rutherford), and Stewarts Creek (Rutherford)

**TN Promise is not sorted by cohorts; any student who was registered and eligible for TNP financial awards in fall 2016 is counted.

** Excludes dual/joint enrollment students; includes audit students

***Other includes not specified and individuals with multiple races