

General Information

About the Fact Book

The Office of Research, Planning and Communication is pleased to present the **2015-2016 Motlow State Community College Fact Book, 21st edition**.

The book is intended as a single, readily accessible, consistent source of information about Motlow State Community College. It is a summary of institutional data gathered from many sources, compiled to capture the 2015-2016 Academic Year. In some instances, multiple years of data are provided for a historical prospective. Enrollment data is extracted from 14th day tables. Though not all-encompassing, the book does provide pertinent facts and figures that may be used for planning, decision making, policy formation, recruitment, and public relations.

The fact book is an annual publication and is made available during the summer semester. For your convenience, an online PDF version of the MSCC Fact Book is available on the Office of Institutional Effectiveness & Research website at <http://www.msc.edu/rpc>.

Sincere appreciation is extended to personnel of internal and external offices who extended their time and expertise to maintain the greatest possible accuracy and standardization of data for this publication.

A concerted effort is made to make this book an increasingly more useful reference that familiarizes the reader with the characteristics of the College's students, faculty, staff, environment and eleven-county service area. Your suggestions and comments toward these goals are welcomed and appreciated.

Sylvia Collins, Ed. S.
Director of Institutional Effectiveness & Research
Motlow State Community College
scollins@mscc.edu
931-393-1679

Mission, Vision & History

Mission Statement

Motlow State Community College is a public, multi-campus college offering certificates, associate degrees, and flexible learning pathways for early transfer, college preparation, and workforce training. Students are prepared for employment, career advancement, and four-year college or university transfer. The College serves an eleven-county area comprised of full-time, part-time, traditional, and non-traditional age students from diverse socio-economic populations with disparate educational and cultural backgrounds. The College offers high quality accredited educational programs and a variety of support services emphasizing and promoting student success.

Vision Statement

The vision of Motlow State Community College is to be the area's recognized center for life-long learning and growth opportunities.

History

Motlow State Community College opened its doors as a two-year community college in 1969 with a student enrollment of 551 and 18 full-time faculty members. More than forty years later, student credit enrollment is over 5,000 and a full-time faculty number 92.

State Senator Reagor Motlow, along with brothers Connor, Robert, and D. E.; mother Mrs. Lem Motlow; sister, Mrs. James Boyd, and uncle, Tom Motlow, donated 187 acres located in Moore County, Tennessee to house the college. The college was named Motlow State Community College as a tribute to the Motlow family.

Motlow State surpasses the vision of its pioneers more than 40 years ago. Motlow embraces the community college concept to its greatest degree. In addition to being a quality education institution where teaching and learning are paramount, Motlow has expanded its services to an 11-county area with four teaching locations in Lynchburg, Fayetteville, McMinnville, and Smyrna.

Motlow's history includes leadership by presidents Sam Ingram, Harry Wagner, Frank Glass, Art Walker, MaryLou Apple and current president Anthony Kinkel. These individuals have guided the college to the forefront in technology and nursing education. The four-year institution continues as a primary customer with the majority of Motlow students in transfer programs.

Motlow prepares its students to meet the challenges of a global community while making an economic, intellectual, social and professional impact in local communities.

Strategic Plan

Strategic Plan

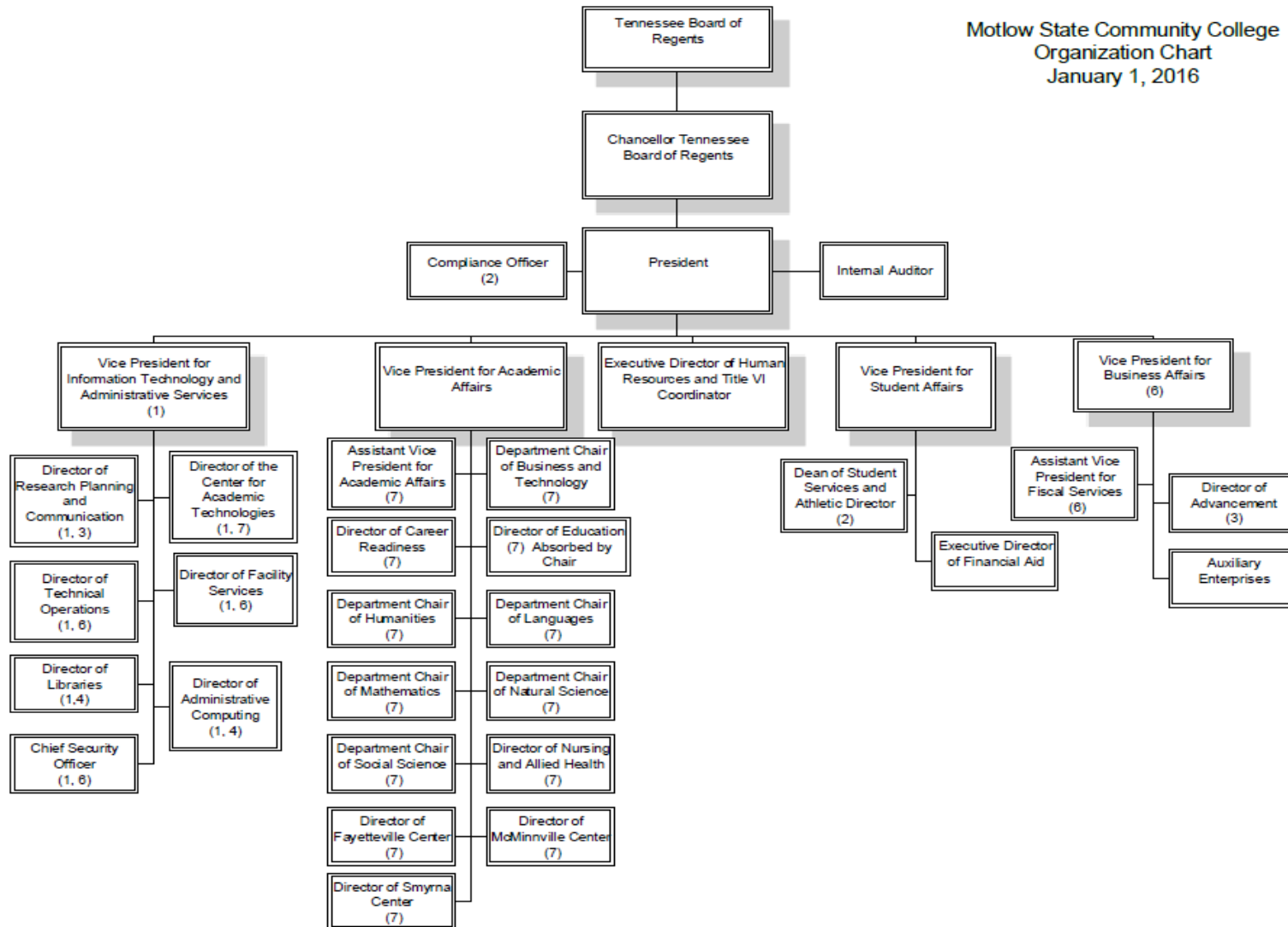
The 2015-2025 Strategic Plan is currently effect and contains the following objectives.

Motlow State Community College will:

1. Increase the total participation level of students and the level of participation of focus populations dual students, adults, academically underprepared and Pell-eligible
2. Increase student indicators of timely progression toward completion of all students and of focus populations adults, academically underprepared and Pell-eligible
3. Achieve a threshold success rate equal to or greater than its peers for courses most critical to student success
4. Increase the number of associate degrees and certificates for all students and for focus populations adults, academically underprepared and Pell-eligible
5. Increase 150% and 300% graduation rates
6. Annually exceed the comparative or college peer group scores for academic success measures including exit exams, major field tests, and licensure exams
7. Develop and implement high impact practices for high enrollment courses
8. Annually exceed the comparative or college peer group percentage of full-time faculty involved in career furthering activities
9. Annually evaluate and improve student support services to students as determined by student satisfaction surveys including CCSSE and SENSE
10. Acquire and/or maintain accreditation for creditable programs and maintain satisfactory audits of non-accredited programs
11. Increase resources from external sources
12. Exceed an annual placement rate of 95% for AAS degree and technical certificate graduates
13. Develop and maintain a comprehensive instructional index for academic disciplines that equals or exceeds that of its peers
14. Maintain a composite financial index that equals or exceeds that of its peers

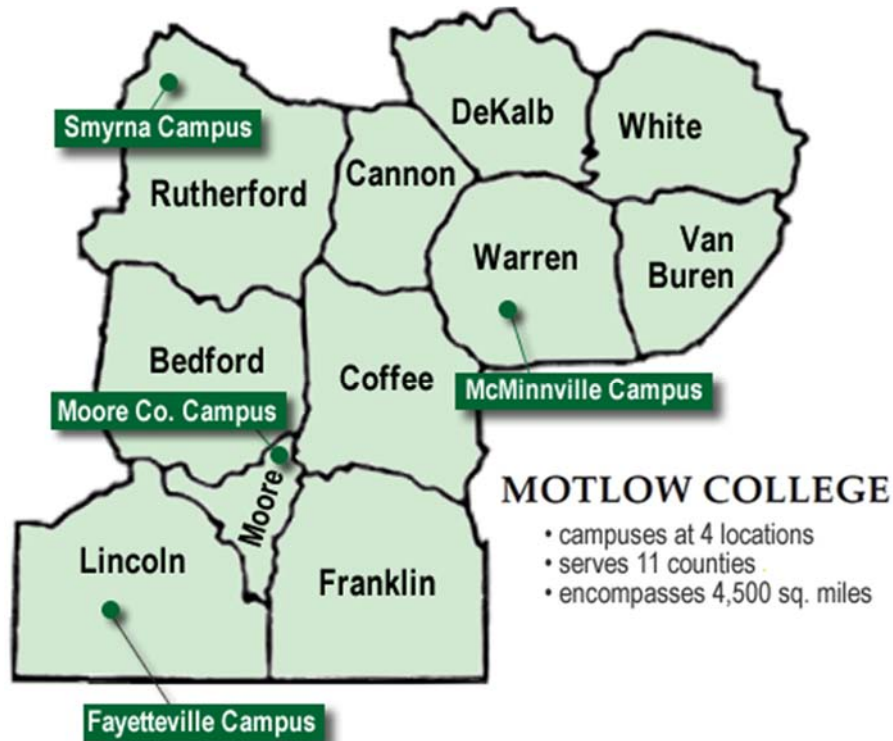
Organizational Chart

Motlow State Community College
 Organization Chart
 January 1, 2016



Service Area

With locations in Lynchburg, Fayetteville, McMinnville, and Smyrna, Motlow's service area encompasses eleven Middle Tennessee counties including Bedford, Cannon, Coffee, DeKalb, Franklin, Lincoln, Moore, Rutherford, Van Buren, Warren, and White counties. These counties are in Local Workforce Investment Areas (LWIA) 6, 7 and 9.



Population Growth in Service Area 2010-2015			
County	2010 Population	2015 Population	Percent Change
Bedford	45,058	47,183	4.7%
Cannon	13,801	13,840	0.3%
Coffee	52,796	54,277	2.8%
DeKalb	18,721	19,182	2.5%
Franklin	41,052	41,449	1.0%
Lincoln	33,361	33,743	1.1%
Moore	6,362	6,322	-0.6%
Rutherford	262,604	298,612	13.7%
Van Buren	5,548	5,677	2.3%
Warren	39,840	40,435	1.5%
White	25,834	26,521	2.7%

Source: quickfacts.census.gov

For additional information on Motlow's service area, see Service Area section.