

Enrollment

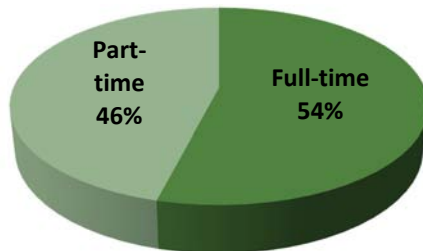
Profile of Student Body

Enrollment by Race					
Race	Fall 2011	Fall 2012	Fall 2013	Fall 2014	Fall 2015
Asian/PI	1.99%	2.30%	2.10%	2.21%	2.45%
Amer. Indian	0.84%	0.95%	0.73%	1.04%	0.25%
Alaskan	0.04%	0.06%	0.17%	0.07%	0.02%
Black	9.62%	9.23%	9.09%	8.79%	8.87%
Hispanic	3.53%	3.72%	4.20%	4.42%	5.00%
White	82.26%	80.79%	79.77%	81.11%	81.09%
Unclassified	1.7%	0.86%	1.99%	3.00%	2.32%
> 1 Race	---	2.10%	1.95%	--	--

Age Distribution					
Age	Fall 2011	Fall 2012	Fall 2013	Fall 2014	Fall 2015
20 & under	46.7%	56.3%	59.5%	62.1%	71.1%
21-24	23.0%	16.4%	16.9%	16.4%	12.4%
25-34	16.9%	14.7%	13.3%	13.1%	10.2%
35 & over	13.4%	12.4%	10.2%	8.4%	6.3%
Avg. Age	24	25	23	22	22
Oldest	76	73	78	75	80
Youngest	16	14	14	8	15

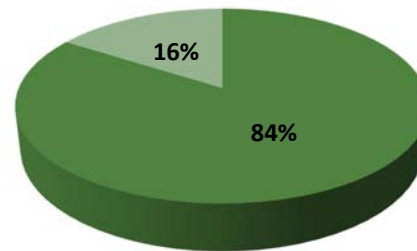
Source: TBR Enrollment by Ethnicity and Race

**Enrollment by Status
Fall 2015**

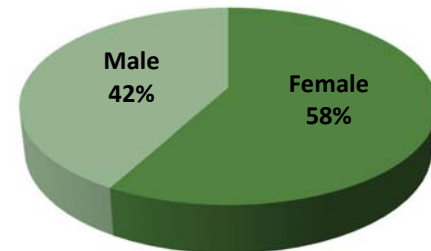


Fall 2015

■ Traditional ■ Non-traditional



**Enrollment by Gender
Fall 2015**



Headcount & FTE Enrollment

Headcount and FTE for Fall and Spring Semesters										
	Fall 2011	Spring 2012	Fall 2012	Spring 2013	Fall 2013	Spring 2014	Fall 2014	Spring 2015	Fall 2015	Spring 2016
Headcount	4,988	4,610	4,763	4,362	4,909	4,400	4,758	4,288	5,256	4,670
FTE	3,064	2,771	2,851	2,533	2,891	2,568	2,899	2,600	3,533	3,095

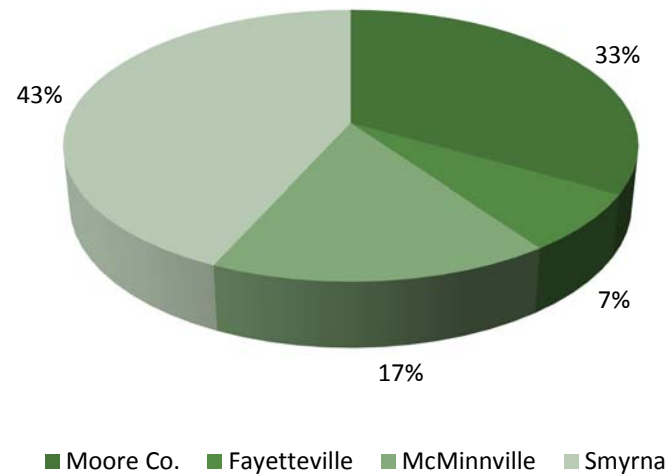
Headcount and FTE by Affiliate Campus				
Affiliate Campus	Fall 2015		Spring 2016	
	HCT	FTE	HCT	FTE
Fayetteville	366	242.4	314	221.20
McMinnville	938	575.7	781	494.07
Moore County	1,637	1,160.0	1,477	1,014.8
Smyrna	2,202	1,508.9	2,004	1,329.4

McMinnville Campus includes the following high schools: DeKalb, Smithville, Spencer Van Buren, Warren and White

Moore County Campus includes the following high schools: Central, Coffee County Central, Community, Franklin and Tullahoma

Smyrna Campus includes Bridgestone and the following high schools: Cannon, Cascade, Oakland, Riverdale and Smyrna

Fall 2015 FTE by Campus



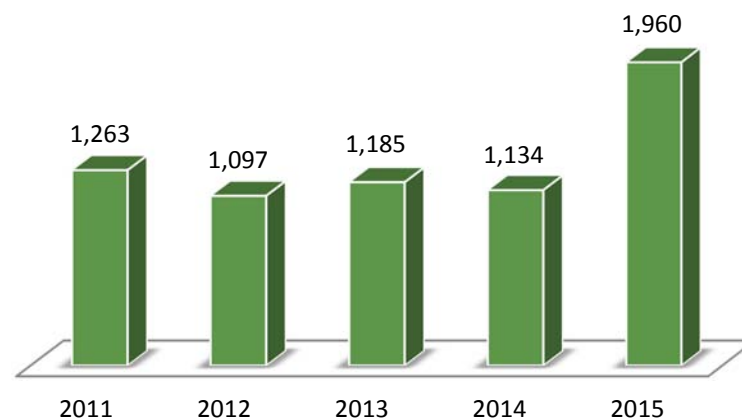
Fall Enrollment Growth

Headcount by Status										
Status	Fall 2011	% Change	Fall 2012	% Change	Fall 2013	% Change	Fall 2014	% Change	Fall 2015	% Change
Part-time	2,772	6.69%	2,750	-0.79%	2,929	6.51%	2,665	-9.0%	2,846	6.8%
Full-time	2,216	-16.25%	2,013	-9.16%	1,980	-1.64%	2,093	5.7%	2,410	15.1%
Total	4,988	-4.88%	4,763	-4.51%	4,909	3.07%	4,758	-3.1%	5,256	10.5%

First-time College and First-time at Institution										
	Fall 2011	% Change	Fall 2012	% Change	Fall 2013	% Change	Fall 2014	% Change	Fall 2015	% Change
Headcount	1,263	1.8%	1,097	-13.1%	1,185	8.0	1,134	-4.3%	1,960	72.8%

Headcount by Type					
Type	Fall 2011	Fall 2012	Fall 2013	Fall 2014	Fall 2015
1 st Freshmen	1,263	1,097	1,185	1,134	1,960
Continuing	2,175	2,096	1,993	1,963	1,957
New Transfer	331	335	350	326	222
Readmit	452	436	422	419	315
Dual	712	731	925	859	759
Other	55	68	34	89	43
Total	4,988	4,763	4,909	4,790	5,256

First-time Freshmen in Fall Semester

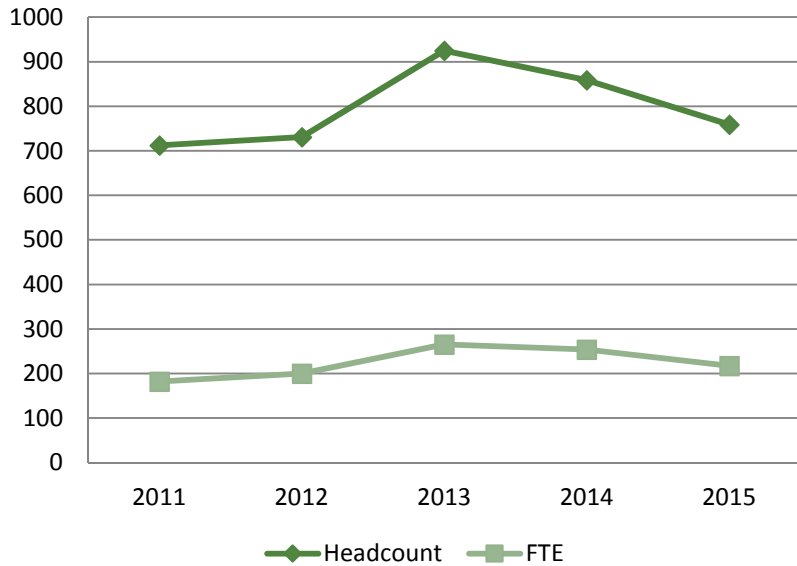


Dual/Joint & TN eCampus Enrollment

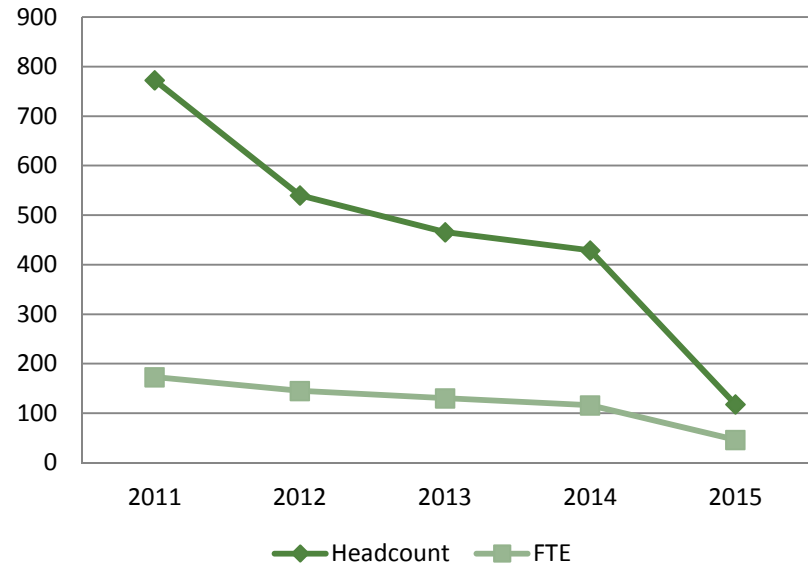
Dual/Joint Enrollment					
	Fall 2011	Fall 2012	Fall 2013	Fall 2014	Fall 2015
Headcount	712	731	925	859	759
FTE	182.0	200.1	265.8	253.7	217.4

TN eCampus Enrollment					
	Fall 2011	Fall 2012	Fall 2013	Fall 2014	Fall 2015
Headcount	773	540	466	429	118
FTE	173.1	145.4	130.0	116.1	46.5

Dual/Joint Enrollment



TN eCampus Enrollment

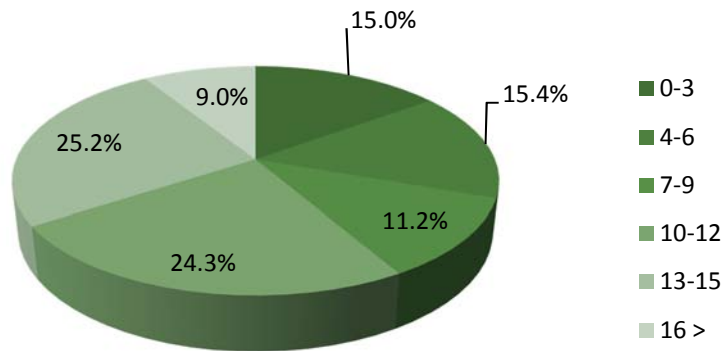


Credit Hour Enrollment & Enrollment by Major

Credit Hour Load Per Student					
Hours	Fall 2011	Fall 2012	Fall 2013	Fall 2014	Fall 2015
0-3	888	880	962	897	788
4-6	769	916	995	879	808
7-9	743	720	713	644	590
10-12	1,361	1,222	1,172	1,195	1,275
13-15	893	761	837	875	1,323
16 >	334	164	230	268	472
Total	4,988	4,763	4,909	4,758	5,256

Headcount by Major					
Major	Fall 2011	Fall 2012	Fall 2013	Fall 2014	Fall 2015
Business Technology	230	212	211	148	113
Education	279	268	250	192	242
Mechatronics	--	21	48	123	175
Nursing & Allied Health	154	152	148	145	174
University Parallel & TTP	3,457	3,259	3,233	3,179	3,689
Undeclared/Other	868	851	1,019	971	863
Total	4,988	4,763	4,909	4,758	5,256

Credit Hour Load Per Student

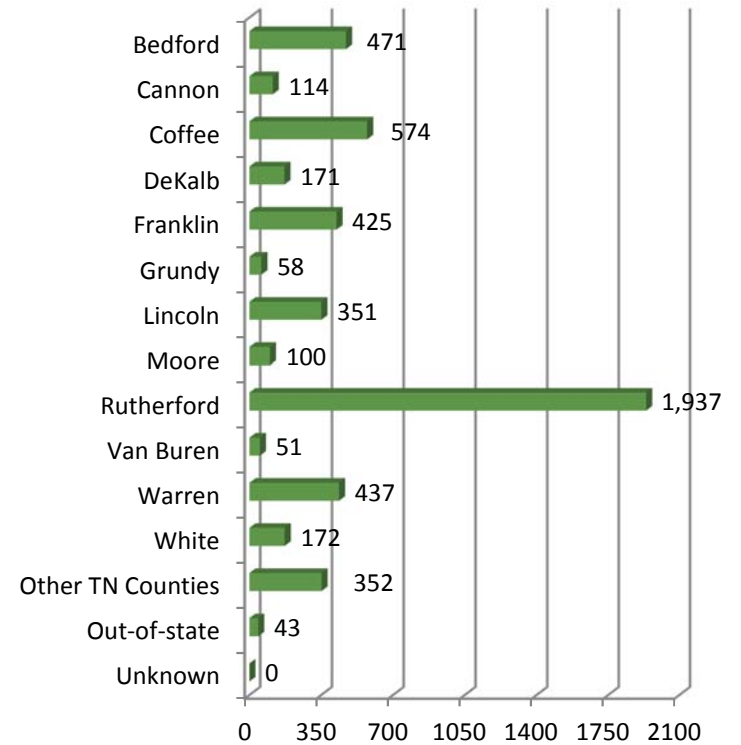


FTE by Major					
Major	Fall 2011	Fall 2012	Fall 2013	Fall 2014	Fall 2015
Business Technology	138	143	123	89	70
Education	205	180	178	137	179
Mechatronics	--	7	22	70	114
Nursing & Allied Health	105	102	99	99	116
University Parallel & TTP	2,350	2,182	2,162	2,237	2,798
Undeclared/Other	266	237	307	267	256
Total	3,064	2,851	2,891	2,953	3,533

Enrollment by Tennessee County

Enrollment by County of Residence						
County	2011	2012	2013	2014	2015	% of Total HC
Bedford	418	388	364	403	471	9.0%
Cannon	108	112	121	112	114	2.2%
Coffee	642	564	589	524	574	10.9%
DeKalb	127	138	152	154	171	3.3%
Franklin	440	424	437	391	425	8.1%
Grundy	54	40	45	50	58	1.1%
Lincoln	418	369	372	356	351	6.7%
Moore	97	101	100	106	100	1.9%
Rutherford	1,558	1,561	1,739	1,666	1,937	36.9%
Van Buren	50	53	64	68	51	1.0%
Warren	518	447	417	414	437	8.3%
White	165	169	142	142	172	3.3%
Other TN Counties	350	367	325	337	352	6.7%
Out-of-state	42	27	41	35	43	0.8%
Unknown	1	3	0	0	0	0%
Total	4,988	4,763	4,909	4,758	5,256	

Fall 2015 Enrollment by County



Headcount: Community College Comparison

Headcount 10-Year Enrollment Trends, 2005 to 2015												
2-Year Institution	2005	2006	2007	2008	2009	2010	2011	2012	2013	2014	2015	% Change 2005 to 2015
CSTCC	7,836	8,060	8,108	8,485	9,431	10,436	10,498	10,160	10,123	9,557	9,436	20.4%
CLSCC	3,027	2,947	2,999	3,335	3,615	3,754	3,832	3,640	3,812	3,529	3,530	16.6%
COSCC	4,747	4,522	4,633	4,767	5,581	5,648	5,514	5,379	5,287	5,231	5,415	14.1%
DSCC	2,457	2,586	2,568	2,749	3,395	3,759	3,777	3,595	3,271	2,863	2,873	16.9%
JSCC	3,859	4,099	4,379	4,381	5,109	5,375	4,935	4,497	4,593	4,928	4,837	25.3%
MSCC	3,407	3,833	4,113	4,394	5,079	5,256	5,004	4,782	4,925	4,793	5,294	55.4%
NSCC	7,198	7,192	7,077	7,716	8,869	9,906	9,883	9,887	10,163	10,048	10,701	48.7%
NSTCC	4,860	5,145	5,237	5,470	6,270	6,780	6,478	6,446	5,895	5,865	6,086	25.2%
PSTCC	7,686	8,188	8,608	8,742	10,297	11,169	11,464	10,681	10,836	10,247	10,416	35.5%
RSCC	5,155	5,353	5,404	5,531	6,281	6,881	6,906	6,659	6,361	5,962	6,012	16.6%
STCC	11,556	11,446	10,617	11,427	13,016	13,505	13,038	12,235	10,876	10,333	9,244	-20.0%
VSCC	7,150	7,370	7,065	7,241	8,430	9,029	8,694	8,210	8,190	7,677	8,075	12.9%
WSCC	5,879	5,738	5,825	5,918	6,853	6,960	6,754	6,571	6,281	6,031	5,971	1.6%
Total 2-Year	74,817	76,479	76,633	80,156	92,226	98,458	96,777	92,742	90,613	87,064	87,890	17.5%

Source: Tennessee Higher Education Commission

FTE: Community College Comparison

FTE 10-Year Enrollment Trends, 2005 to 2015												
2-Year Institution	2005	2006	2007	2008	2009	2010	2011	2012	2013	2014	2015	% Change 2005 to 2015
CSTCC	4,890	5,054	5,044	5,344	5,987	6,712	6,671	6,585	6,388	5,901	6,190	26.6%
CLSCC	2,103	2,034	2,022	2,195	2,504	2,592	2,617	2,482	2,487	2,316	2,413	14.7%
COSCC	3,120	2,963	3,003	3,081	3,569	3,579	3,417	3,348	3,352	3,263	3,634	16.5%
DSCC	1,744	1,693	1,668	1,741	2,213	2,419	2,334	2,217	1,918	1,678	1,690	-3.1%
JSCC	2,573	2,791	2,953	2,803	3,313	3,410	3,260	2,847	2,722	2,825	2,907	13.0%
MSCC	2,392	2,566	2,739	2,892	3,353	3,337	3,069	2,925	2,984	2,984	3,654	52.8%
NSCC	4,074	4,082	4,063	4,315	5,154	5,619	5,686	5,681	5,796	5,807	6,272	54.0%
NSTCC	3,142	3,374	3,387	3,606	4,231	4,624	4,423	4,289	3,912	3,888	4,215	34.2%
PSTCC	4,963	5,149	5,446	5,686	6,695	7,274	7,402	7,057	6,978	6,644	6,755	36.1%
RSCC	3,603	3,738	3,764	3,766	4,227	4,389	4,205	4,153	3,964	3,777	3,891	8.0%
STCC	7,332	7,306	6,794	7,219	8,465	8,431	8,216	7,555	6,801	6,355	6,169	-15.9%
VSCC	4,553	4,677	4,427	4,582	5,501	5,777	5,449	5,091	4,985	4,747	5,406	18.7%
WSCC	3,826	3,872	3,884	4,082	4,780	4,808	4,595	4,425	4,103	4,008	4,074	6.5%
Total	48,315	49,299	49,194	51,302	59,993	62,973	61,343	58,656	56,392	54,192	57,269	18.5%

Source: Tennessee Higher Education Commission