

General Information

About the Fact Book

The Office of Research, Planning and Communication is pleased to present the **Motlow State Community College Fact Book, 2010-2011**, the 16th edition of this publication.

The book is intended as a single, readily accessible, consistent source of information about Motlow State Community College. It is a summary of institutional data gathered from many sources, compiled to capture the 2010-2011 Academic Year. In some instances, multiple years of data are provided for a historical prospective. Enrollment data is extracted from 14th day tables. Though not all-encompassing, the book does provide pertinent facts and figures that may be used for planning, decision making, policy formation, recruitment, and public relations.

The fact book is an annual publication and is made available during the summer semester. For your convenience, an online PDF version of the MSCC Fact Book is available on the Office of Research, Planning and Communication web site at www.msc.edu/rpc/factbook.aspx.

Sincere appreciation is extended to personnel of internal and external offices who extended their time and expertise to maintain the greatest possible accuracy and standardization of data for this publication.

A concerted effort is made to make this book an increasingly more useful reference that familiarizes the reader with the characteristics of the college's students, faculty, staff, environment and eleven-county service area. Your suggestions and comments toward these goals are welcomed and appreciated.

Sylvia Collins, Ed. S.
Director of Research, Planning and Communication
Motlow State Community College
scollins@mscc.edu
931-393-1679

Mission, Vision & History

Mission Statement

Motlow State Community College is a public, multi-campus college offering certificates, associate degrees, and flexible learning pathways for early transfer, college preparation, and workforce training. Students are prepared for employment, career advancement, and four-year college or university transfer. The College serves an eleven-county area comprised of full-time, part-time, traditional, and non-traditional age students from diverse socio-economic populations with disparate educational and cultural backgrounds. The College offers high quality accredited educational programs and a variety of support services emphasizing and promoting student success.

Vision Statement

The vision of Motlow State Community College is to be the area's recognized center for life-long learning and growth opportunities.

History

Motlow College opened its doors as a two-year community college in 1969 with a student enrollment of 551 and 18 full-time faculty members. More than forty years later, student credit enrollment is over 4,700 and full-time faculty number 79.

State Senator Reagor Motlow, along with brothers Connor, Robert, and D. E.; mother Mrs. Lem Motlow; sister, Mrs. James Boyd and uncle, Tom Motlow, donated 187 acres located in Moore County, Tennessee to house the college. The college was named Motlow State Community College as a tribute to the Motlow family.

Motlow College surpasses the vision of its pioneers more than 40 years ago. Motlow embraces the community college concept to its greatest degree. In addition to being a quality education institution where teaching and learning are paramount, Motlow has expanded its services to an 11-county area with four teaching locations in Lynchburg, Fayetteville, McMinnville and Smyrna.

Motlow's history includes leadership by presidents Sam Ingram, Harry Wagner, Frank Glass, Art Walker and current president MaryLou Apple. These individuals have guided the college to the forefront in technology and nursing education. The four-year institution continues as a primary customer with the majority of Motlow students in transfer programs.

Motlow prepares its students to meet the challenges of a global community while making an economic, intellectual, social and professional impact in local communities.

Strategic Goals

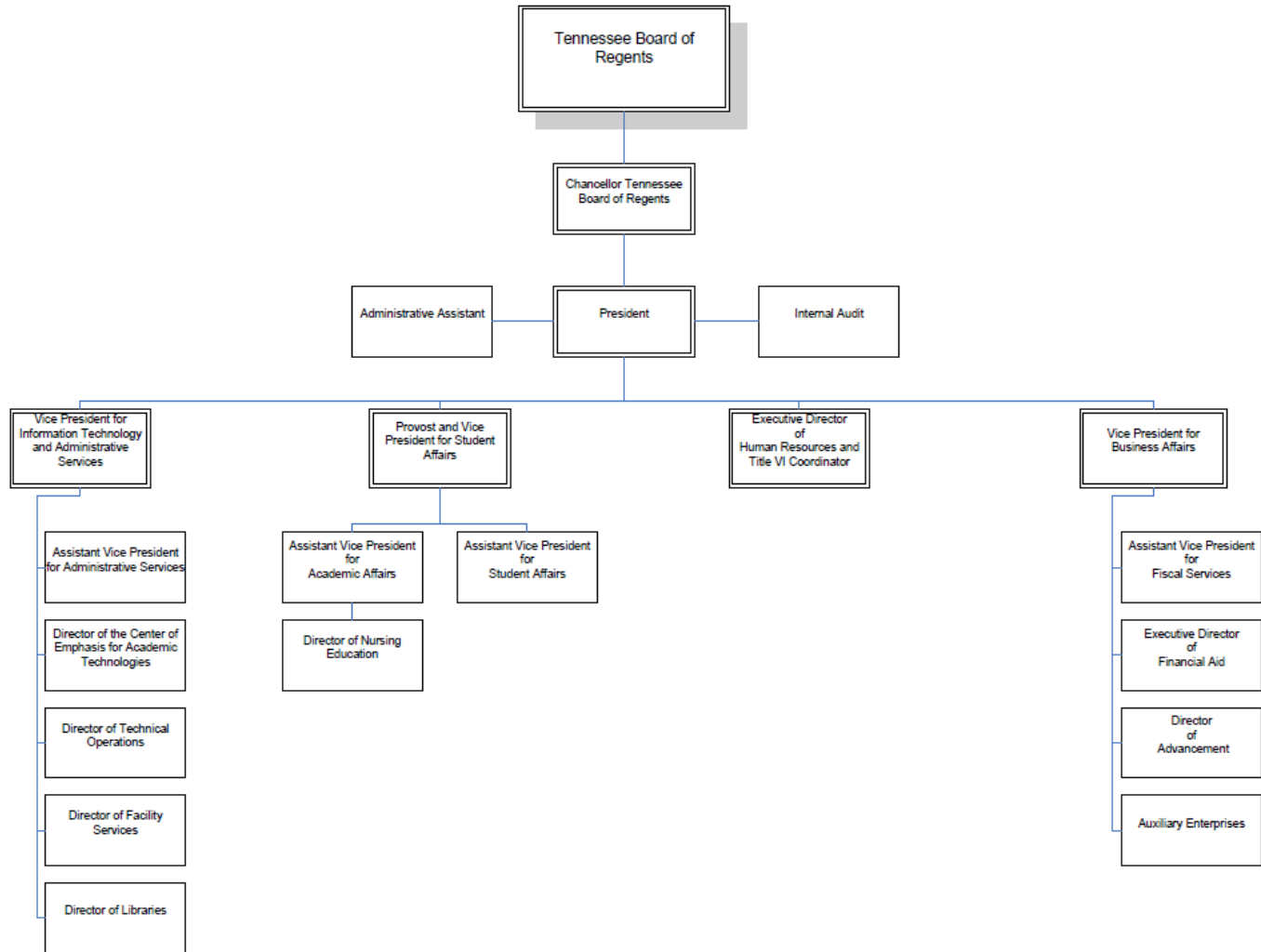
Strategic Goals

Current strategic planning goals for Motlow are in effect from 2010-2015. The strategic plan for the College is developed over time and involves broad based participation from all college constituencies. Annually, goals are reviewed and utilized in the operation planning process. Progress toward goal achievement is monitored on an ongoing basis. Current goals are as follows.

Motlow State Community College will:

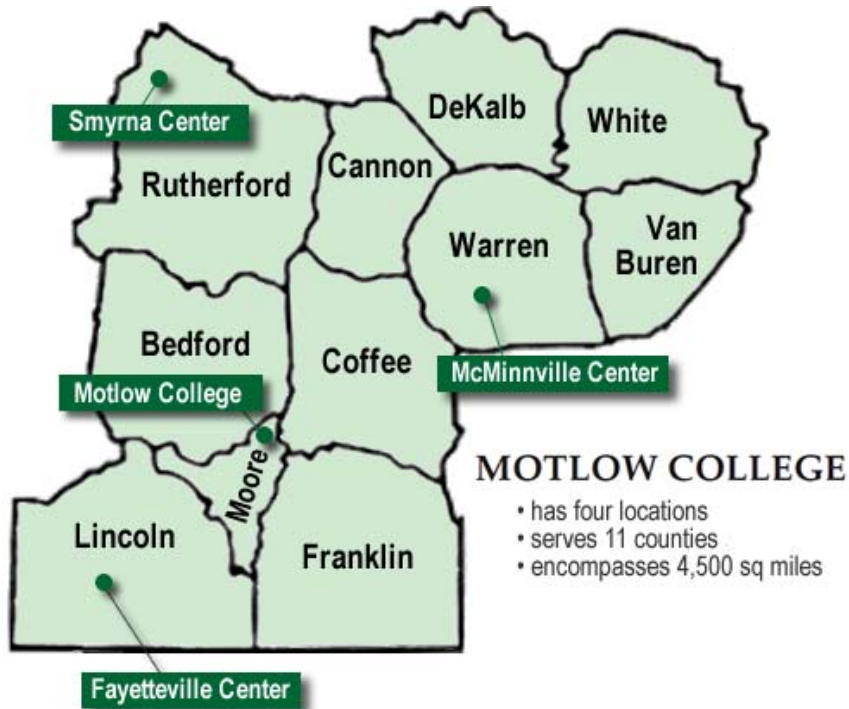
1. Expand the use of technology to increase access to post-secondary education.
 - Increase the headcount of students enrolling in collegiate-level distance learning courses by 10% by 2015
2. Enhance access to higher education for traditionally underserved populations
 - Increase the total participation level of non-traditional or part-time students by 30% by 2015
3. Create and implement a redesigned and comprehensive learning support program to prepare students who are not academically prepared for college level courses
 - Have a redesigned and comprehensive learning support system to prepare students who are not academically prepared for college level courses in place by 2015
4. Develop and implement programs and methodologies to enhance student persistence to the completion of the post-secondary credential or degree
 - Increase fall-to-spring progression rate by 2%
 - Increase the number of transfer students to MTSU by 10% per academic year
 - Exceed an annual job placement rate of 90%
5. Increase the number of students who complete associate degree or certificates
 - Exceed an annual increase in the number of awards of 7%
6. Monitor and improve the effectiveness of educational programs and services
 - Annually exceed the comparative or college peer group scores for academic success measures including the ETS Proficiency Profile, major field tests and national subject evaluations
 - Annually evaluate and improve student support services to all students as determined by student and alumni satisfaction surveys and other measures
7. Improve student learning through culturally diverse perspectives to prepare students for success in a global society
 - Incorporate international education into 25% of existing courses across the curriculum as specified in QEP
8. Increase resources from external sources
 - increase external resources by 5% by 2015
9. Advance our college as a role model for sustainability
 - Adopt five new best practices for efficiency in support of sustainability

Organizational Chart



Service Area

With locations in Lynchburg, Fayetteville, McMinnville, and Smyrna, Motlow's service area encompasses eleven Middle Tennessee counties including Bedford, Cannon, Coffee, DeKalb, Franklin, Lincoln, Moore, Rutherford, Van Buren, Warren, and White counties. These counties are in Local Workforce Investment Areas (LWIA) 6, 7 and 9.



Population Growth in Service Area 2000-2009			
County	2000 Population	2009 Population	Percent Change
Bedford	37,586	45,058	19.1%
Cannon	12,826	13,801	7.6%
Coffee	48,014	52,796	10.0%
DeKalb	17,423	18,723	7.5%
Franklin	39,270	41,052	4.5%
Lincoln	31,340	33,361	6.4%
Moore	5,740	6,362	10.8%
Rutherford	182,023	262,604	44.3%
Van Buren	5,508	5,548	0.7%
Warren	38,276	39,839	4.1%
White	23,102	25,841	11.9%

Source: quickfacts.census.gov

For additional information on Motlow's service area, see Service Area section.