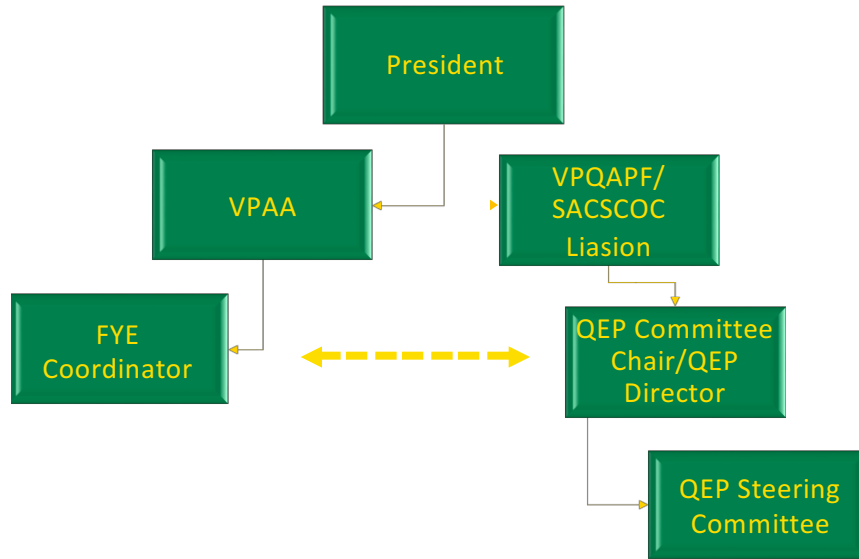


## Organizational Structure

The MSCC QEP developed through a college-wide, inclusive process that involved representation from each unit of the College and support of the President and the President's Cabinet (all MSCC Vice Presidents and the Executive Director of Human Resources). Planning, implementation of the QEP, and oversight of its progress is the responsibility of the QEP Steering Committee Chair/QEP Director, whose schedule reflects redistributed time to provide administrative oversight, training and faculty development, and coordination with College constituents. At the recommendation of the SACSCOC Liaison, the President appointed Asst.

Prof. Meagan McManus as QEP Committee Chair/QEP Director. Prof. McManus holds a Master of Arts in English and is ABD in a Doctor of Education in Assessment, Learning, and School Improvement program for a SACSCOC accredited university, currently writing her dissertation. In addition, Prof. McManus serves as MSCC First Year Experience Coordinator (See Appendix) and has six years of higher education teaching experience and three years of managerial experience in a business field. Thus, she is an exemplary candidate to facilitate MSCC's QEP. The QEP Chair/Director facilitates collaborative efforts among the Vice President for Quality Assurance and Performance Funding/SACSCOC Liaison, the Vice President for Academic Affairs, other members of the President's Cabinet, deans, and college-wide department heads. The QEP Director works closely with the Director of Institutional Effectiveness and Assessment to coordinate execution of internal and external QEP assessments and the reliability and validity of those assessment results throughout the duration of the five-year plan. The QEP Director provides QEP progress and data checks to the QEP Committee and the President's Cabinet after the conclusion of each fall and spring semester, as well as to all faculty and staff each fall, providing meaningful feedback after reviewing the data and participating in the implementation of the continuous cycle of improvement.

Table 8.1: QEP Organizational Chart



*For further information on Motlow State’s Quality Enhancement Plan, please contact: Meagan McManus, QEP Committee Chair, [mmcmanus@mscc.edu](mailto:mmcmanus@mscc.edu) or Dr. Scott Cook, Vice President of Quality Assurance and Performance Funding, [scook@mscc.edu](mailto:scook@mscc.edu)*